



**nextbelt®**

**The Belt With No Holes®**

— 2021 GOLF CATALOG —



**TEAM NEXBELT**  
**MARC LEISHMAN**

# TABLE OF CONTENTS

Go-In! Colour Series V.3 Series .....	1	Custom Ribbon Belts .....	17
Classic Colour Series V.3 Series .....	2	Custom Buckles .....	18
<b>NEW</b> Fast Eddie Series V. 3 .....	3	Custom Straps .....	19
<b>NEW</b> Hampton Series .....	4	Custom Box .....	20
<b>NEW</b> Go-In! Shield Series V.3 .....	5	Tournament .....	21-22
Go-In! Tradition Series .....	6	Nexbelt Influencers .....	24
<b>NEW</b> Youth Series .....	7		
Miscellaneous .....	8		
Ryder Cup Series .....	9-10		
<b>NEW</b> Heritage Series .....	11-12		
Separates: Buckles .....	13-14		
Separates: Straps .....	14-15		

## Our **DRIVE** Vision Statement:

- D**eliver what we promise with integrity
- R**etain the human touch
- I**nvest in good people generously
- V**alue our customers unconditionally
- E**mbrace change with innovation



2021 is here and we're looking forward to the possibilities of what lies ahead. While no one came away from the 2020 unscathed, we hope that you and your family are safe and looking for positive changes for the new year.

We made some new designs we're quite excited about but the one we're smitten with is the Youth Series. We always thought that the kids wearing belts looked like they were wearing hand me downs from their parents: Large wide straps with humongous buckles. These belts are just too big for the small bodies of the kids. We shrunk the straps and buckles down to be more proportional to their little frames and gave them three popular colors to match 99% of their wardrobes. We also brought the prices down to match the little kids size because parents don't want to spend big money on something their kid can out grow quickly. We tested them out in few clubs in Texas and we sold out. We really think grandparents will be picking these up for their grandkids so make sure you point them out.

We have what we believe is the largest collection of USA belts in our Heritage Series. We just came out with a few new designs and the Anthem is knocking people's socks off. It is a simple design that ads textures and colors with contrast stitching that everyone should have at least one in their wardrobe.

We've been working on a new ordering system and crossing our fingers that it will fall in place for 2021. Our goal is to make your job and our rep's job easier. If you have any suggestions for us please let our reps know or contact us directly. We're here to help both of us grow.

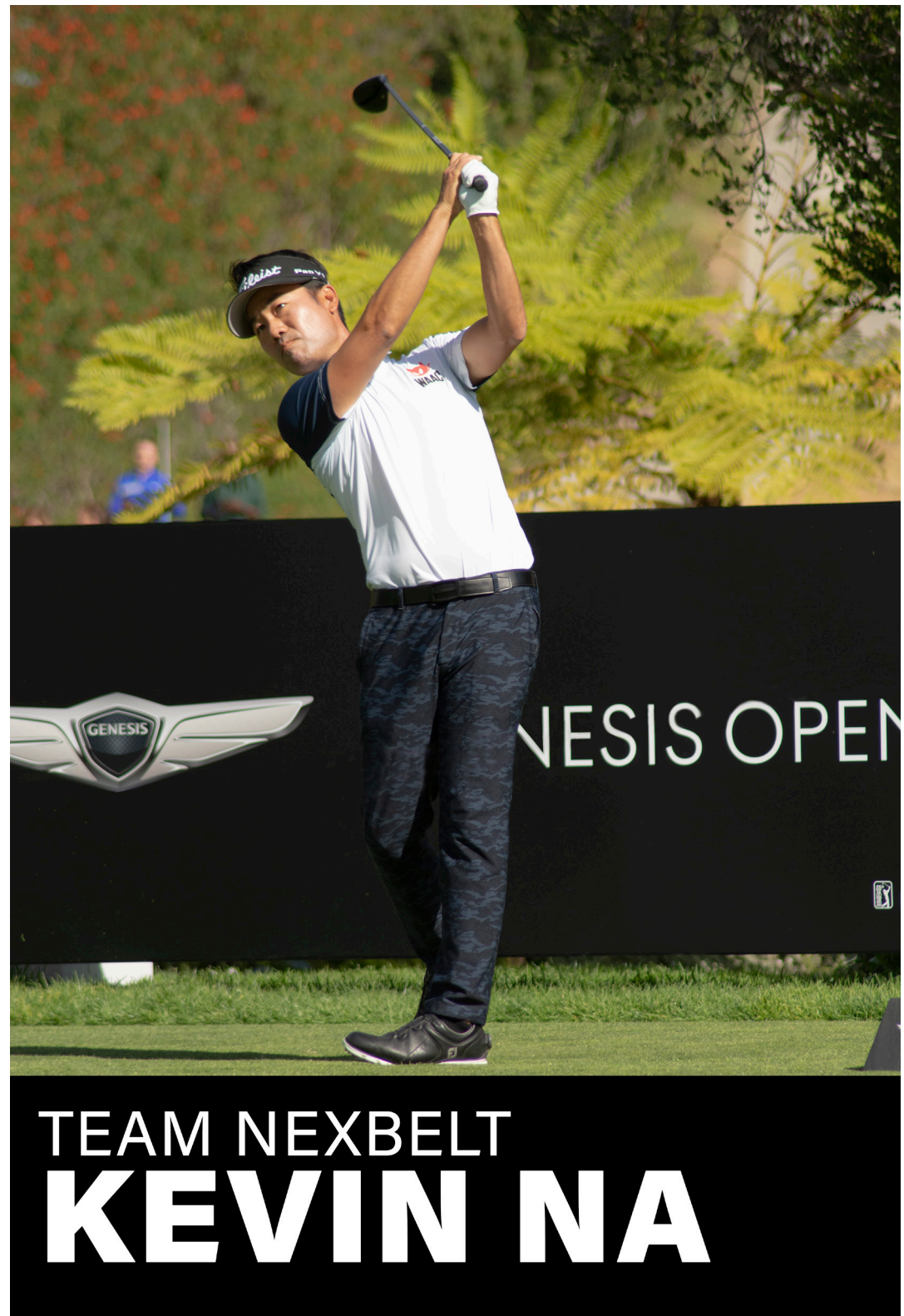
Best to you for 2021.

**Best,**  
Eddie and Francis Rowland,  
Tom Hunsucker

**QUALITY IS NEVER AN ACCIDENT. IT IS ALWAYS**

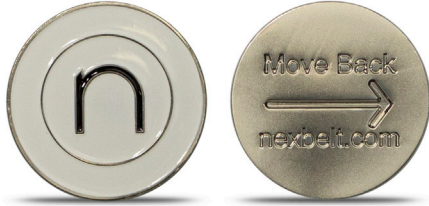
**THE RESULT OF INTELLIGENT EFFORT .**

**- JOHN RUSKIN**



# GO-IN! COLOUR SERIES V.4

Our Go-Ins have clean modern lines for today's golfers. And it has the convenient hidden ball marker. This year we have the Nickel Pearl finish. Size 1 5/8" x 2 5/16" - Belt strap is 1 3/8". Fits up to 45" waist.



Every Go-In! Buckle has our new 2 ball marker with the direction arrow



Patent number 9,185,942



**GO-IN! PITCH BLACK**

**XEN0513**

ITEM CODE: PGC3778

★ AVAILABLE FOR STOCK TOURNAMENT PROGRAM



**GO-IN! COGNAC**

**XEN0513**

ITEM CODE: PGC3914



**GO-IN! DEEP SEA NAVY**

**XEN0513**

ITEM CODE: PGC3822



**GO-IN! TOBACCO**

**XEN0513**

ITEM CODE: PGC3907



**GO-IN! SMOKE GREY**

**XEN0513**

ITEM CODE: PGC4133



**GO-IN! WINNER WHITE**

**XEN0513**

ITEM CODE: PGC4164

## CLASSIC COLOUR SERIES V.3

A subtle change of having the stitching match the leather creates a unifying look. And this is one of our favorite buckles - the Jarrod named after the late Jarrod Lyle. Buckle size 1 5/8" x 3" - Belt strap is 1 3/8". Fits up to 45" waist.



**CLASSIC PITCH BLACK W/ GUNMETAL FINISH** XEN0562

ITEM CODE: PCC4676

★ AVAILABLE FOR STOCK TOURNAMENT PROGRAM



**CLASSIC COGNAC W/ PEARL FINISH** XEN0562

ITEM CODE: PCC4720

★ AVAILABLE FOR STOCK TOURNAMENT PROGRAM



**CLASSIC DEEP SEA NAVY W/ PEARL FINISH** XEN0562

ITEM CODE: PCC4850



**CLASSIC TOBACCO W/ BRASS FINISH** XEN0562

ITEM CODE: PCC6373



**CLASSIC SMOKE GREY W/ GUNMETAL FINISH** XEN0562

ITEM CODE: PCC5055

★ AVAILABLE FOR STOCK TOURNAMENT PROGRAM



**CLASSIC WINNER WHITE W/ PEARL FINISH** XEN0562

ITEM CODE: PCC5048

★ AVAILABLE FOR STOCK TOURNAMENT PROGRAM

## NEW! FAST EDDIE SERIES V. 3

Convenience is the forefront of this spectacular design. Having a buckle that has a Ball Marker, Divot Fixer and Bottle Opener in one small package is the reason we refer to it as the Golfer's Survival Tool. We've added three additional new designs this year. Buckle size 1 5/8" x 2 5/16" - Belt strap is 1 3/8". Fits up to 45" waist.

NEW!



**XAVIER X FACTOR**  
ITEM CODE: PGF7493

**XEN0543**

NEW!



**LUCKY BLUE X FACTOR**  
ITEM CODE: PGF7509

**XEN0543**

NEW!



**PLATINUM X FACTOR**  
ITEM CODE: PGF8193

**XEN0543**



**FAST EDDIE CARBON BLACK**  
ITEM CODE: PGF0616

**XEN0543**



**FAST EDDIE PITCH BLACK**  
ITEM CODE: PGF6380

**XEN0543**



**NEW! HAMPTON SERIES**

Ribbon belts are a great way to add style around your waist. New addition to the catalog for this year is the Hampton Shamrock. Buckle size 1 5/8" x 2 5/16" - Belt strap is 1 3/8". Fits up to 50" waist.



**NEW! HAMPTON CLOVER** | ITEM CODE: PCM6878 **XEN0562**



**HAMPTON USA** | ITEM CODE: PCM2443 **XEN0562**



★ AVAILABLE FOR STOCK TOURNAMENT PROGRAM **HAMPTON TEE TIME** | ITEM CODE: PCM2450 **XEN0562**

# NEW! GO-IN! SHIELD SERIES V.3

The Shield has been a big hit with its modern beveled design. The subtle design gives it such a dressy distinctive look. This year we added a new color in the Smooth Grey. Buckle size 1 5/8" x 2 5/16" – Belt strap is 1 3/8". Fits up to 45" waist.

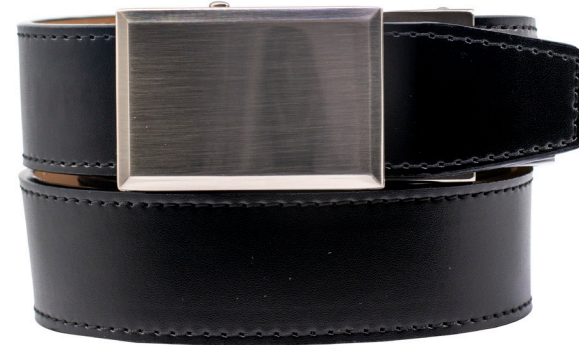
NEW!



## GO-IN! SHIELD GREY

GO-IN! PART NO: PGG7523  
CLASSIC PART NO: PCE7530

XEN0513  
XEN0562



## GO-IN! SHIELD 3.0 BLACK

GO-IN! PART NO: PGG4515  
CLASSIC PART NO: PCE4492

XEN0513  
XEN0562



## GO-IN! SHIELD 3.0 ESPRESSO

GO-IN! PART NO: PGG4553  
CLASSIC PART NO: PCE4539

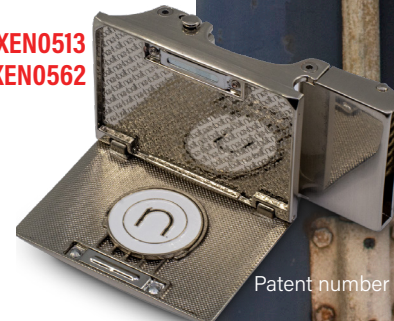
XEN0513  
XEN0562



## GO-IN! SHIELD 3.0 WHITE

GO-IN! PART NO: PGG4614  
CLASSIC PART NO: PCE4584

XEN0513  
XEN0562



Patent number 9185,942





**GO-IN! ESPRESSO**  
ITEM CODE: PGG4430

**XEN0513**



**GO-IN! SMOOTH WHITE**  
ITEM CODE: PGG4454

**XEN0513**



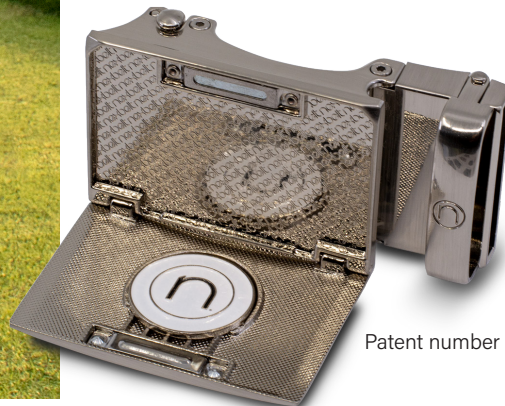
**GO-IN! CARBON BLACK**  
ITEM CODE: PGG4423

**XEN0513**



**GO-IN! SMOOTH BLACK**  
ITEM CODE: PGG4478

**XEN0513**



Patent number 9,185,942

## GO-IN! TRADITION SERIES

The beveled edge added a unique, modern design that separates our belts from the copy-cats. The Go-In buckle remains a popular favorite of the golfing enthusiasts. Buckle size 1 5/8" x 2 5/16" - Belt strap is 1 3/8" Fits up to 45" waist.

## NEW! YOUTH SERIES

Kids have always had to wear adult sized belts so they always looked big and bulky on their little frames. We've changed that. The straps are narrower and sized more proportional. And each buckle has our innovative Go-In system. The straps are made of a synthetic blend. Buckle size 1 3/16 x 2 1/8 - Belt strap is 1 1/4 x 35" Fits up to 35" waist.



**YOUTH BLACK**

ITEM CODE: PGJ7981

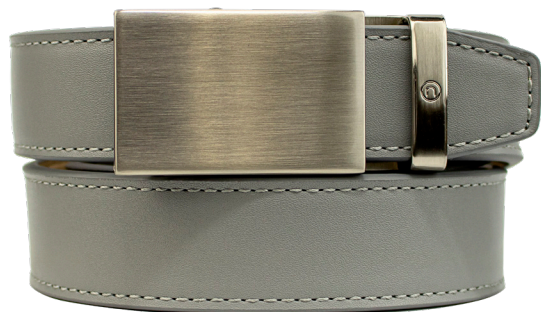
**XEN0051**



**YOUTH WHITE**

ITEM CODE: PGJ7967

**XEN0051**



**YOUTH GREY**

ITEM CODE: PGJ7974

**XEN0051**



# MISCELLANEOUS

Buckle size 1 5/8" x 2 5/16" - Belt strap is 1 3/8". Fits up to 45" waist.



**GO-IN CARBON WHITE GOLF**

*ITEM CODE: EIS5877*

**XEN0513**



**JAKE CARBON WHITE**

*ITEM CODE: PCE6779*

**XEN0562**



**ASTON EAGLE WHITE**

*ITEM CODE: PCE6366*

**XEN0562**



**ASTON EAGLE BLACK**

*ITEM CODE: PCE6335*

**XEN0562**

# RYDER CUP SERIES

No Ryder Cup in 2020? No problem! Prepare for this year's event in 2021 with all of these styles. They are limited so they'll go fast! All of the buckles are of the Go-In concept. Buckle size 1 5/8" x 2 5/16" - Belt strap is 1 3/8". Fits up to 45" waist.



**GO-IN! RYDER CUP SMOOTH BLACK** XEN0063  
ITEM CODE: CPG6441



**GO-IN! RYDER CUP CAPTAIN** XEN0063  
W/WHITE & RED STITCH - ITEM CODE: CPG6465



**GO-IN! RYDER CUP ADMIRAL WHITE** XEN0063  
W/BLEU & RED STITCH - ITEM CODE: CPG6434



**GO-IN! RYDER CUP PG SUNDAY RED** XEN0063  
ITEM CODE: CPG6458

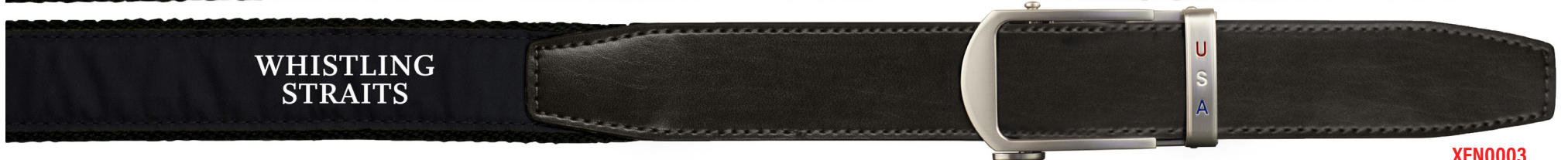
**GO-IN! RYDER CUP NICKEL BUCKLE**  
ITEM CODE: CBG6403 XEN0041



FRONT SIDE BALL MARKER

BACK SIDE BALL MARKER

**HAMPTON RYDER CUP BELT**  
ITEM CODE: CPC6472



XEN0003

# RYDER CUP SERIES

Nexbelt will be offering the only Ryder Cup cap with the ratchet adjustable system – the most comfortable cap available today. Offer them something unique! One size fits all - small to extra large.



**RYDER CUP STEEL GREY**  
ITEM CODE: HCB-RCWSG



**RYDER CUP STEEL GREY**  
ITEM CODE: HCB-RCWSG

**XEN0002**

**RYDER CUP PITCH BLACK**  
ITEM CODE: HCB-RCWSB

**XEN0002**

**RYDER CUP DEEP SEA NAVY**  
ITEM CODE: HCB-RCWSN

**XEN0002**

**RYDER CUP WINNER WHITE**  
ITEM CODE: HCB-RCWSW

**XEN0002**

## NEW! HERITAGE SERIES

We designed some of the most extensive line of USA theme belts in the U.S so you can show your love of the country year round. Aston buckle sizes 1 11/16" x 2 13/16", Classic/Go-In size 1 5/8" x 2 5/16". Belt strap is 1 3/8". Fits up to 45" waist.

NEW!



**ANTHEM WHITE**  
ITEM CODE: PCH7868

**XEN0562**

NEW!



**ANTHEM NAVY**  
ITEM CODE: PCH7851

**XEN0562**

NEW!



**LIBERTY BRAIDED**  
ITEM CODE: PCD8087

**XEN0562**

NEW!



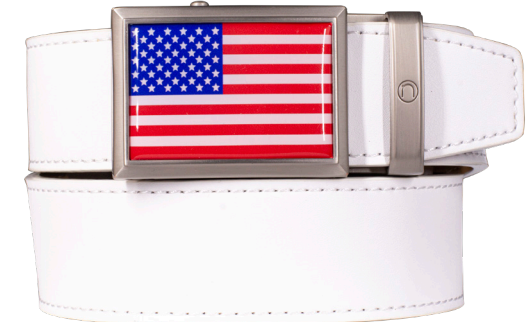
**CAPTAIN**  
ITEM CODE: PCH0524

**XEN0562**



**USA BLACK GO-IN! 3.0**  
ITEM CODE: PGH5475

**XEN0513**



**USA WHITE GO-IN! 3.0**  
ITEM CODE: PGH6304

**XEN0513**



**BLACK SERIES USA**

CLASSIC ITEM CODE: PCB5451

GO-IN! ITEM CODE: PGB5468

**XEN0562**  
**XEN0513**



**SUPER PATRIOT WHITE**

ITEM CODE: PCZ4300

**XEN0513**



**SUPER PATRIOT BLACK**

ITEM CODE: PCZ4294

**XEN0513**



**USA ASTON BLACK**

ITEM CODE: PCH0586

**XEN0513**



**USA ASTON WHITE**

ITEM CODE: PCH2771

**XEN0513**



**USA EMBOSSED BLACK ASTON**

ITEM CODE: PCH7721

**XEN0513**

**NEW!**



**USA EMBOSSED LEGACY**

ITEM CODE: PCH8179

**XEN0513**



**USA ASTON BLACK SERIES**

ITEM CODE: PCH7769

**XEN0592**

# SEPARATES: BUCKLES



**NEW! PLATINUM X FACTOR**  
ITEM CODE: BGX7479



**NEW! LUCKY BLUE X FACTOR**  
ITEM CODE: BGX7486



**NEW! XAVIER X FACTOR**  
ITEM CODE: BGX8186



**NEW! GO-IN NICKEL SHIELD  
W/ BEVELED KEEPER**  
ITEM CODE: BGG7462



**SHIELD NICKEL BEVELED**  
GO-IN! ITEM CODE: BGG4508  
CLASSIC ITEM CODE: BCE4485



**SHIELD GUNMETAL BEVELED**  
GO-IN! ITEM CODE: BGG5406  
CLASSIC ITEM CODE: BCE5413



**STEALTH BEVELED**  
GO-IN! ITEM CODE: BGG5383  
CLASSIC ITEM CODE: BCE5390



**FAST EDDIE BEVELED NICKEL**  
ITEM CODE: BGF4591



**HOUSTON BRUSHED NICKEL**  
ITEM CODE: BCS7417



**BEVELED USA BLACK**  
GO-IN! ITEM CODE: BGB5901  
CLASSIC ITEM CODE: BCB5918



**BEVELED USA GUNMETAL**  
GO-IN! ITEM CODE: BGH5888  
CLASSIC ITEM CODE: BCH5895



**BEVELED USA COLOR**  
GO-IN! ITEM CODE: BGH5444



**ASTON USA COLOR**  
ITEM CODE: BCH0579



**ASTON EMBOSSED USA**  
ITEM CODE: BCH7639



**ASTON USA BLACK**  
ITEM CODE: BCB7820



**ASTON BRUSHED PEWTER**  
ITEM CODE: BCE5970



**ASTON BLACK**  
ITEM CODE: BCE5949



**ASTON EAGLE BLACK**  
ITEM CODE: BCE5956



**ASTON EAGLE WHITE**  
ITEM CODE: BCE5963



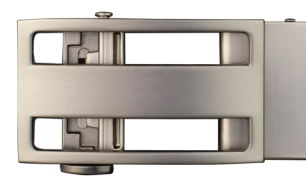
**APOLLO PEWTER**  
ITEM CODE: BCS6243



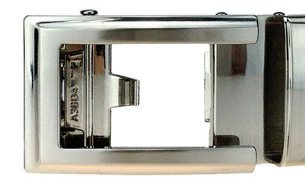
**APOLLO BLACK**  
ITEM CODE: BCS6250



**NEW! JARROD PEARL NICKEL**  
ITEM CODE: BCE0487



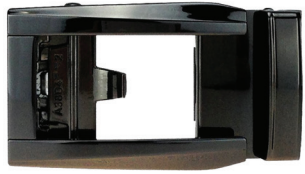
**JAKE SATIN NICKEL**  
ITEM CODE: BCP9916



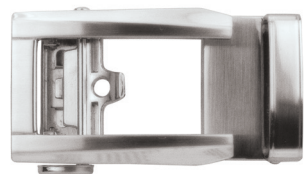
**ARTEMIS BRUSHED NICKEL**  
ITEM CODE: BCA1729



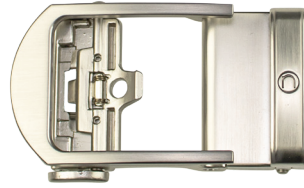
## SEPARATES: BUCKLES



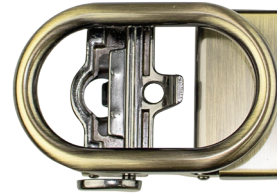
**PROMETHEUS GUNMETAL**  
ITEM CODE: BCL1163



**PROMETHEUS MATTE NICKEL**  
ITEM CODE: BCL1859



**ALDRICH SATIN NICKEL**  
ITEM CODE: BCM2634



**OSCAR BRASS**  
ITEM CODE: BCN6168



**ALLIE CHROME**  
ITEM CODE: BC13983



**ALLIGATOR BLACK**  
ITEM CODE: SAL0913



**ALLIGATOR COFFEE**  
ITEM CODE: SAL3747



**ALLIGATOR GREY II**  
ITEM CODE: SAL7066



**ALLIGATOR NAVY**  
ITEM CODE: SAL0944



**ALLIGATOR TAN**  
ITEM CODE: SAL0951



**ALLIGATOR WHITE**  
ITEM CODE: SAL0968



**CARBON BLACK**  
ITEM CODE: SEL0760



**EBONY**  
ITEM CODE: SEL0852



**SMOOTH BLACK**  
ITEM CODE: SEL0869



**SMOOTH WHITE**  
ITEM CODE: SEL0906



**ESPRESSO**  
ITEM CODE: SEL4683



**WALNUT**  
ITEM CODE: SEL0753



**NEW! SMOOTH GREY**  
ITEM CODE: SEL7516



**NEW! PEBBLE GRAIN SUNDAY RED**  
ITEM CODE: SCL8117



**PEBBLE GRAIN STORM GREY**  
ITEM CODE: SCL1422



**PEBBLE GRAIN TOBACCO**  
ITEM CODE: SCL3716

## SEPARATES: STRAPS

# SEPARATES: STRAPS



**PEBBLE GRAIN PITCH BLACK**  
*ITEM CODE: SCL3761*



**PEBBLE GRAIN COGNAC**  
*ITEM CODE: SCL3631*



**PEBBLE GRAIN WINNER WHITE**  
*ITEM CODE: SCL3754*



**PEBBLE GRAIN DEEP SEA NAVY**  
*ITEM CODE: SCL3617*



**PEBBLE GRAIN SMOKE GREY**  
*ITEM CODE: SCL3723*



**HERITAGE CAPTAIN**  
*ITEM CODE: SCL1903*



**LEGARDO BLACK**  
*ITEM CODE: SWL3679*



**LEGARDO BROWN**  
*ITEM CODE: SWL3693*



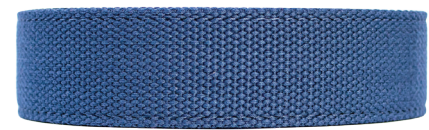
**PORTOFINO CORDOVAN**  
*ITEM CODE: SPL1538*



**NEWPORT TAN**  
*ITEM CODE: SNC5130*



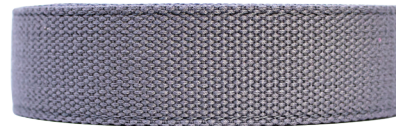
**NEWPORT NATIONAL**  
*ITEM CODE: SNC1392*



**NEWPORT NAVY**  
*ITEM CODE: SNC1385*



**NEWPORT BLACK**  
*ITEM CODE: SNC1354*



**NEWPORT GREY**  
*ITEM CODE: SNC1361*

**PROMOTE YOUR BRAND!  
YOUR EVENT!  
YOUR GOLF COURSE!  
YOUR COMPANY!**



# CUSTOM RIBBON RATCHET BELTS!

We're the first belt company in the world to make ribbon ratchet belts and now we're offering customization. Offer your members and guests a familiar look but with the convenience of wearing a ratchet belt. These belts are great for branding your golf course or corporate events and make excellent tournament gifts. And with our cut to size system, they are so convenient because you don't have to worry about sizes. Fits up to 50".



# HOW TO CUSTOMIZE: STEP 1: CHOOSE YOUR BUCKLE – GOLF OR CLASSIC SERIES

## ETCHED .....



SATIN NICKEL OR BRUSHED NICKEL



GUNMETAL



STEALTH



ASTON PEWTER

## EMBOSSSED .....



SATIN NICKEL



GUNMETAL



STEALTH



ASTON PEWTER

## COLOR .....



BRUSHED NICKEL



GUNMETAL



STEALTH



ASTON PEWTER

# HOW TO CUSTOMIZE: STEP 2: CHOOSE YOUR STRAP

Fourteen leather and canvas straps to choose from. Ask to upgrade to Premium Finishes.



SMOOTH BLACK  
ITEM CODE: SEL0869



ESPRESSO  
ITEM CODE: SEL4683



WALNUT  
ITEM CODE: SEL0753



SMOOTH WHITE  
ITEM CODE: SEL0906



CARBON BLACK  
ITEM CODE: SEL0760



SMOKE GREY PG  
ITEM CODE: SCL3723



STORM GREY PG  
ITEM CODE: SCL1422



DEEP SEA NAVY PG  
ITEM CODE: SCL3617



ALLIGATOR BLACK  
ITEM CODE: SAL0913



ALLIGATOR COFFEE  
ITEM CODE: SAL3747



NAVY NEWPORT  
ITEM CODE: SNC1385



BLACK NEWPORT  
ITEM CODE: SNC1354



GREY NEWPORT  
ITEM CODE: SNC1361



BRAIDED CHARCOAL 2.0  
ITEM CODE: SBC7745

# HOW TO CUSTOMIZE: STEP 3: CHOOSE YOUR BOX



**POLY CARBONATE BOX**



**SATIN BLACK SOFTBOARD**



**PIANO BLACK WOOD FINISH**



**BROWN BOX**  
*Standard box has Nexbelt logo.*



**BROWN BOX**  
*Logo upgrade shown*

# TOURNAMENT

NEW!



**BRAIDED GREY 2.0**

ITEM CODE: PCD8063

NEW!



**BRAIDED CHARCOAL 2.0**

ITEM CODE: PCD8056

NEW!



**ANCHOR BRAIDED**

ITEM CODE: PCD8094

**All packages listed are available for tournament discount. Place your order today!  
Contact your local Nexbelt representative.**

NEW!



**HERITAGE CAPTAIN**

ITEM CODE: PCH0524



**HAMPTON TEE TIME W/ SATIN NICKLE FINISH**

ITEM CODE: PCM2450



**GO-IN PITCH BLACK**

ITEM CODE: PGC3778

**50-71 = 1 FREE BELT | 72-143 = 5% OFF | 144-199 = 10% OFF | 200+ = 15% OFF  
ORDER 72+ GET ADDITIONAL 4 BELTS FREE FOR STAFFING PROGRAM!**



# PACKAGES



**GO-IN COGNAC**  
ITEM CODE: PGC3914



**CLASSIC PITCH BLACK W/ GUNMETAL FINISH**  
ITEM CODE: PCC4676



**CLASSIC SMOKE GREY W/ GUNMETAL FINISH**  
ITEM CODE: PCC5055



**CLASSIC WINNER WHITE W/ SATIN NICKEL FINISH**  
ITEM CODE: PCC5048



**GO-IN! MATCH BELT WINNER WHITE**  
ITEM CODE: PGG3051



**CROCODILE BLACK**  
ITEM CODE: PCR1699



**CROCODILE BROWN**  
ITEM CODE: PCR1736



**VETICA CARBON BLACK**  
ITEM CODE: PCE4638



@golf\_.is\_.life



@tfeltz\_golf



@sean\_walsh14



@xeve\_2323



@stexaspga

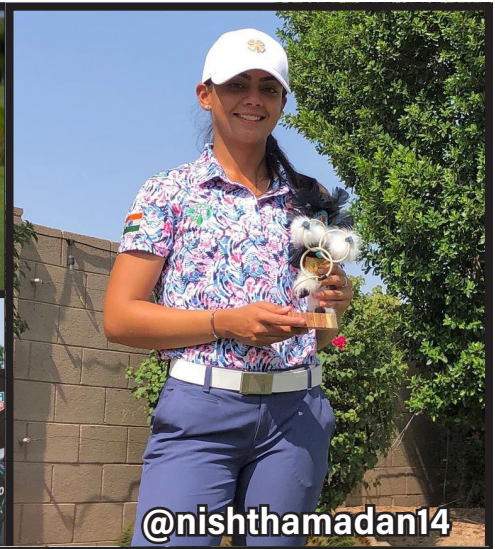




@catlinjohn



@arnaudseriegolf



@nishthamadan14



@kevinna915



@kjroy\_



@arnaudseriegolf



@rodperrygolf



@colinmccarthygolf



nextbelt®

The Belt With No Holes®

— 2021 DRESS CATALOG —



# TABLE OF CONTENTS

<b>NEW</b> Rogue Series .....	1	<b>NEW</b> Workman Series .....	13
<b>NEW</b> Shield Series .....	2	<b>NEW</b> Frances Series .....	14
Vintage Full Grain Series .....	2	<b>NEW</b> Dakota Series .....	15
Vetica Series .....	3	Legardo Sleek Series .....	16
Classic Series .....	4	Madrid Series .....	16
Crocodile Series .....	5	Miscellaneous .....	17
Alligator Series .....	6	Display Systems .....	18
<b>NEW</b> Basket Weave Series .....	7		
Camden Series .....	7		
Suede Series .....	8		
<b>NEW</b> Braided Series .....	9		
Newport Series .....	10		
XL Series .....	11		
Vanguard Series .....	12		

## Our **DRIVE** Vision Statement:

- D**eliver what we promise with integrity
- R**etain the human touch
- I**ncubate in good people generously
- V**alue our customers unconditionally
- E**mbrace change with innovation



*When it comes to ratchet belts, we have the most extensive, comprehensive line in North America if not the world. We design our own buckles from scratch and create molds for them. Other companies use their manufacturer's pre-existing molds and claim them as their own designs.*

*That's not the Nexbelt way. We have a vision of what a person would want to have in an accessory that compliments their wardrobe and pursue with great passion. We don't believe in using one buckle design and giving it a different finish and a different strap to represent our entire line up like others out there. We are not a one trick pony.*

*We offer a variety that encourages customers to come back for more styles and each series of designs are unique from the buckle design to leather offerings.*

*They say variety is the spice of life and we aim to please!*

**Best,**

*Eddie and Francis Rowland,  
Tom Hunsucker*

**QUALITY IS NEVER AN ACCIDENT. IT IS ALWAYS**

**THE RESULT OF INTELLIGENT EFFORT .**

**- JOHN RUSKIN**



## NEW! ROGUE SERIES

This versatile belt can be worn with jeans or chinos. Some even pair them with slacks for the office. This year we added another design – the Carbon Black with matte gunmetal buckle. Buckle size 1 5/8" x 2 5/16" – Belt strap is 1 3/8". Fits up to 45" a waist.



NEW!



**ROGUE CARBON BLACK 2.0**

ITEM CODE: PCE7554

**XEN0562**



**ROGUE NICKEL WALNUT**

ITEM CODE: PCE6526

**XEN0562**



**ROGUE NICKEL BLACK**

ITEM CODE: PCE4713

**XEN0562**



**ROGUE BRASS ESPRESSO**

ITEM CODE: PCE4737

**XEN0562**

## NEW! SHIELD SERIES V.3

The Shield has been a big hit with its modern beveled design. The subtle design gives it such a dressy distinctive look. This year we added a new color in the Smooth Grey. Buckle size 1 5/8" x 2 5/16" – Belt strap is 1 3/8". Fits up to 45" waist.

NEW!



**SHIELD 3.0 SMOOTH GREY** XEN0562  
CLASSIC ITEM CODE: PCE7530



**SHIELD 3.0 WHITE** XEN0562  
CLASSIC ITEM CODE: PCE4584



**SHIELD 3.0 BLACK** XEN0562  
CLASSIC ITEM CODE: PCE4492



**SHIELD 3.0 ESPRESSO** XEN0562  
CLASSIC ITEM CODE: PCE4539

## VINTAGE FULL GRAIN SERIES

Full grain leather that is soft and malleable to the touch. This classic design paired with a pair of jeans offers that iconic American look. Buckle size 1 5/8" x 2 5/16" – Belt strap is 1 3/8". Fits up to 45" waist.



**VINTAGE BOURBON** XEN0024  
ITEM CODE: PCP4881



**VINTAGE COAL** XEN0024  
ITEM CODE: PCP4874





# VETICA SERIES

This series of belts are the perfect dress belt for an outfit that matches the occasion. It hits the check box in looks and offers unparalleled comfort for the office, date night or any special occasions where presentation is important. Buckle size 1 5/8" x 2 5/16" – Belt strap is 1 3/8". Fits up to 45" waist.



**VETICA BROWN**  
ITEM CODE: PCE4676

**XEN0562**



**VETICA BLACK**  
ITEM CODE: PCE4706

**XEN0562**



**VETICA CARBON BLACK**  
ITEM CODE: PCE4638

**XEN0562**

★ AVAILABLE FOR STOCK TOURNAMENT PROGRAM



# CLASSIC SERIES

Our first patented design continues to win converts from pin buckle belts. It's a classic design that endures. Buckle size 1 5/8" x 2 5/16" – Belt strap is 1 3/8". Fits up to 45" waist.



**CLASSIC SMOOTH BLACK**  
ITEM CODE: PCE5246  
**XEN0562**



**CLASSIC EBONY**  
ITEM CODE: PCE2580  
**XEN0562**



**CLASSIC ESPRESSO**  
ITEM CODE: PCE4065  
**XEN0562**



**CLASSIC WALNUT**  
ITEM CODE: PCE2603  
**XEN0562**



## CROCODILE SERIES

Inspired by a certain lefty on the golf course, we've designed this new crocodile embossed belt. The strap is a little wider – 1 ½" instead of 1 ⅜". Be prepared for compliments. Buckle size 1 ¾" x 3" – Belt strap is 1 ½". Fits up to 45" waist.



### CROCODILE BLACK

**XEN0574**

ITEM CODE: PCR1699

★ AVAILABLE FOR STOCK TOURNAMENT PROGRAM



### CROCODILE BROWN

**XEN0574**

ITEM CODE: PCR1736

★ AVAILABLE FOR STOCK TOURNAMENT PROGRAM

# ALLIGATOR SERIES

A sophisticated look that is a favorite on and off the golf course. And no alligators were harmed! Buckle size 1 5/8" x 2 5/16" – Belt strap is 1 3/8". Fits up to 45" waist.



**ALLIGATOR WHITE**  
ITEM CODE: PCA1644

**XEN0574**



**ALLIGATOR NAVY**  
ITEM CODE: PCA1477

**XEN0574**



**ALLIGATOR COFFEE**  
ITEM CODE: PCA1606

**XEN0574**



**ALLIGATOR TAN**  
ITEM CODE: PCA1460

**XEN0574**



**ALLIGATOR BLACK**  
ITEM CODE: PCA1453

**XEN0574**



**ALLIGATOR GREY**  
ITEM CODE: PCA1651

**XEN0574**





## NEW! BASKET WEAVE SERIES

We've rethought this design thoroughly. It took a lot of R&D but we're very happy to say this maybe the best leather basket weave ratchet belt on the market today. Which is easy to say since we're the only one that is capable of this. What makes this belt unique is that it stretches like a normal weaved belt. Buckle size 1 5/8" x 2 5/16" - Belt strap is 1 3/8". Fits up to 45" waist.

NEW!



**MADURO WEAVE BLACK**

ITEM CODE: PCE6717

NEW!



**XEN0562 CLARO WEAVE BROWN**

ITEM CODE: PCE6724

**XEN0562**

## CAMDEN SERIES

Sometimes you want your belt to express a little more of yourself. Instead of the traditional smooth surface, a little lizard texture adds a little character to your wardrobe. Buckle size 1 5/8" x 2 5/16" - Belt strap is 1 3/8". Fits up to 45" waist.



**CAMDEN BLACK**

ITEM CODE: PCX5369

**XEN0562**



**CAMDEN BROWN**

ITEM CODE: PCX5376

**XEN0562**

# SUEDE SERIES

A luxury belt that is preferred for its upscale casual look. The suede is soft to the touch. For the adventurous person that wants to go beyond the normal leather look. Buckle size 1 13/16" x 2 5/8" – Belt strap is 1 3/8". Fits up to 45" waist.



**SUEDE TAN**  
ITEM CODE: PCE0791

**XEN0562**



**SUEDE BLACK**  
ITEM CODE: PCE0746

**XEN0562**



**SUEDE GREY**  
ITEM CODE: PCE0975

**XEN0562**



**SUEDE NAVY**  
ITEM CODE: PCE0821

**XEN0562**



## NEW! BRAIDED SERIES

Major updates for the lauded braided belts! We changed the buckle style with the faux pin for increased realism. We redesigned the long leather tip and now offer a short leather one with a small Nexbelt medallion. And we added more colors! What makes this belt unique is that it stretches like a normal braided belt. Buckle size 1 5/8" x 2 5/16" – Belt strap is 1 3/8". Fits up to 50" waist.



**BRAIDED BLACK 2.0** | ITEM CODE: PCD8049

**XEN0562**



**BRAIDED GREY 2.0** | ITEM CODE: PCD8063

**XEN0562**



**BRAIDED NAVY 2.0** | ITEM CODE: PCD8070

**XEN0562**



**BRAIDED TAN** | ITEM CODE: PCD8100

**XEN0562**



**BRAIDED ANCHOR** | ITEM CODE: PCD8094

**XEN0562**

★ AVAILABLE FOR STOCK TOURNAMENT PROGRAM



**BRAIDED CHARCOAL 2.0** | ITEM CODE: PCD8056

**XEN0562**

★ AVAILABLE FOR STOCK TOURNAMENT PROGRAM

# NEWPORT SERIES V.4

These belts are great with shorts and casual dress. They are the perfect choice in humid weather because of their lightness and breathability. And we have every color needed for a person's wardrobe on or off the golf course. Buckle size 1 11/16" x 2 3/4" – Belt strap is 1 3/8". Fits up to 50" waist.



**NEWPORT BLACK**

ITEM CODE: PCN6533

**XEN0012**



**NEWPORT GREY**

ITEM CODE: PCN6540

**XEN0012**



**NEWPORT NAVY**

ITEM CODE: PCN6557

**XEN0012**



**NEWPORT TAN**

ITEM CODE: PCN6564

**XEN0012**



**NEWPORT NATIONAL**

ITEM CODE: PCN1408

**XEN0012**



**NEWPORT WHITE**

ITEM CODE: PCN1422

**XEN0012**



## XL SERIES

Big and tall folks are giving us high compliments for our belts. They love the easiness of use and the sturdiness of the construction. Buckle size 1 5/8" x 2 5/16" - Belt strap is 1 3/8". Fits up to 67" waist.



**CLASSIC ESPRESSO XL**

*ITEM CODE: PCE2542*

**XEN0513**



**CLASSIC EBONY XL**

*ITEM CODE: PCE0500*

**XEN0513**



## VANGUARD SERIES SLIM 1 1/4" BELT

Thin is sometimes in. There are people who just prefer a thinner belt. The Vanguard is 1 1/4" compared to our normal 1 3/8". That may not sound like much but with the way we worked the stitching and the contouring of the strap, it gives the illusion of being 1" wide. And it works well for both men and ladies. Buckle size 1 5/8" x 2 5/16" - Belt strap is 1 1/4". Fits up to 45" waist.



**VANGUARD SLIM BLACK**

ITEM CODE: PCP5055

**XEN0522**



**VANGUARD SLIM BROWN**

ITEM CODE: PCP5062

**XEN0522**



## NEW! WORKMAN SERIES

These belts are built for heavy duty work and the wear and tear of a being on a job site. Be it construction or warehouse duties, they are stiff enough to carry the extra weight of tools, phones and other items for the trades. Buckle size 1 11/16" x 2 7/16" - Belt strap is 1 1/2". Fits up to 50" waist



**TORQUE BLACK**  
ITEM CODE: PCW8131

**XEN0562**



**TORQUE COYOTE**  
ITEM CODE: PCW8124

**XEN0562**

## NEW! FRANCES SERIES

We've added two new colors to the line. No need to grab a guy's belt when these beautiful belts were designed expressly for the ladies. Buckle size is 1 3/16 x 2" - Belt strap is 1 3/8" Fits up to 40" waist. **EACH PACKAGE INCLUDES AN EXTRA BUCKLE!**

NEW!



**FRANCES BROWN**

ITEM CODE: PCM7769

**XEN0562**

NEW!



**FRANCES PINK**

ITEM CODE: PCM7752

**XEN0562**



**FRANCES EBONY**

ITEM CODE: PCM0586

**XEN0562**



**FRANCES WHITE**

ITEM CODE: PCM0593

**XEN0562**





## NEW! DAKOTA SERIES

We came up with a buckle that has a smidge of the Western look without having to pull on your cowboy boots. This versatile thin belt go with jeans, slacks or use it on a dress to cinch the waist. Buckle size is 1 9/16 x 1 5/8" – Belt strap is 1". Fits up to 40" waist. **EACH PACKAGE INCLUDES AN EXTRA BUCKLE!**



**DAKOTA EBONY** (Fits up to 40" waist)  
*ITEM CODE: PCK8025*

**XEN0012**



**DAKOTA WHITE** (Fits up to 40" waist)  
*ITEM CODE: PCK8001*

**XEN0012**



**DAKOTA BROWN** (Fits up to 40" waist)  
*ITEM CODE: PCK8018*

**XEN0012**

# LEGARDO SLEEK SERIES

A thin belt is all the rage and with our Lizard imprint. It adds a nice style point to your wardrobe. Buckle size is 1 3/16 x 2" – Belt strap is 1". Fits up to 40" waist.

**NOTE! EACH PACKAGE INCLUDES AN EXTRA BUCKLE!**



**LEGARDO SLEEK BROWN** (Fits up to 40" waist)  
ITEM CODE: PCI4867 **XEN0012**

**LEGARDO SLEEK PINK** (Fits up to 40" waist)  
ITEM CODE: PCI4836 **XEN0012**

# MADRID SERIES

The leathers are slightly textured giving the strap a little nuance to an outfit. The thin size will fit any pants loop. Buckle size is 1 3/16 x 2" – Belt strap is 1". Fits up to 40" waist.



**MADRID BLACK** (Fits up to 40" waist)  
ITEM CODE: PCK4959 **XEN0012**

**MADRID WHITE** (Fits up to 40" waist)  
ITEM CODE: PCK4966 **XEN0012**



# MISCELLANEOUS

All belt packages straps are 1 3/8" wide.



**PORTOFINO CORDOVAN**  
*ITEM CODE: PCP2504*

**XEN0053**



**PORTOFINO BROWN**  
*ITEM CODE: PCP3747*

**XEN0053**



**CLASSIC HOUSTON BLACK**  
*ITEM CODE: PCE6762*

**XEN0562**



**SIDNEY**  
*ITEM CODE: PCM7998*

**XEN0562**

# DISPLAY SYSTEMS

## TRIANGLE ROTATING DISPLAY

Holds 45 buckles, 40 belt straps, and 24 boxed belt packages. 5'7" high x 2' wide.



## WOOD 6 BELT COUNTER DISPLAY

4" high x 10" wide x 9.5" deep



## STAND UP DISPLAY

Holds 80 boxed belt packages, 100 belt straps, 36 buckles. 5'9" high x 24" wide x 22" deep



## WOOD 16 BELT COUNTER DISPLAY

16.5" high x 23.5" wide x 4.5" deep



## SLAT WALL

No counter or table space? We have you covered. With the belts hanging in place, the bracket takes up only 10" x 23" space. Hang them at a level where the customer can see the top of the boxes.



## ATTRACTIVE SPACE SAVING BOX DESIGN

