



2021 NEXBELT **GUN BELT**



INTRODUCTION:

2020 was an unprecedented year and we hope you and your family made it through safely. With an additional 2 million new gun owners, we expect a huge growth of the gun market. Every new owner will need a belt and we hope they will choose Nexbelt. We are the disrupter in the gun belt market, and we will continue down this path with determination and focus.

We've made some incremental changes to our belts. The width of the Supreme, Titan and Rogue belts have increased from 1 3/8 to 1 1/2 inch. The Bond Series will remain at 1 3/8 so they can slide through the loops on dress pants unencumbered. We've redesigned the Supreme to keep them small yet stout for the ever, growing popularity of appendix carry.

Women have taken a liking to our belts so much so that we have designed a specific belt named after our founder Frances. It's a dressy ladies belt that can be worn on a night out or at the office and blend in with their surroundings seamlessly.

We are looking forward to the new year and helping you grow your business.

Best
Eddie, Tom & Francis

OWNERS OF NEXBELT



TABLE OF CONTENTS

2021 GUN BELT CATALOG

1	INTRO/TABLE OF CONTENTS
2	TECHNOLOGY
3	TITAN GUN BELTS
4	ROGUE GUN BELTS
5	SUPREME APPENDIX
6	GUARDIAN GUN BELTS
7	GUARDIAN SPARTAN
8	BOND GUN BELTS
9	FRANCES EDC GUN BELTS
10	XL GUN BELTS
11	SPECIALTY SERIES
12	GEAR
13	BELT DISPLAY
14	CUSTOMIZATION

STIFF CONSTRUCTION

A nylon liner provides stiffness required for the weight of a firearm and its accessories.

PRC

POLYAMIDE NYLON

Strong enough to replace metal in certain applications.

PRECISEFIT™

Adjusts in 1/4" increments versus 1" increments on traditional belts.

QUICK RELEASE

Allows quick adjustment without removing strap.

MATERIAL

Made of a super-high density microfiber material that is an advanced composite of ultra fine polyester fibers.

SCREW CONSTRUCTION

Instead of pins, stainless steel screws coated in thread lock are used in construction of the buckle. Pins can back out.

SCALE TO FIT

Convenient for users to determine their size & cut to fit up to 50" waist. Also available in XL size up to 67".

HEAVY DUTY CLASP

Our wide clasp with extra teeth and the combination of two set screws assist the clasp to hold extra weight of firearms and accessories.

STAINLESS STEEL SCREWS INSTEAD OF PINS

More reliable because pins can back out. Only Nexbelt does this!

TITAN EDC **GUN BELTS**



This is our version of an instructor gun belt with our ratchet technology. It looks like a normal nylon belt but has none of its flaws: Hard to take off, or stretching where you'll have to continuously re-adjust. Nexbelt PreciseFit™ ratchet technology allows you to find your perfect fit and hold its place securely with confidence. Designed for the weight of a firearm with back-up magazines and extra gear, our stiffened liner will handle the weight without rollover.

Buckle size 1 7/8" x 3" Strap width is 1 1/2". Fits up to 50" waist.



TITAN BLACK No.: PCS2672



TITAN COYOTE No.: PCS2122



TITAN GREY No.: PCS1972



TITAN DARK BROWN No.: PCS3273



TITAN OD GREEN No.: PCS3303



ROGUE EDC **GUN BELTS**

If your idea of everyday wear is jeans and a shirt, then the Rogue Series belt was designed for you. This durable gun belt has the looks of a normal gun belt but without the drawbacks. Adjustments are easily made in $\frac{1}{4}$ " increments so you'll always have that precise fit. Our nylon liner ensures no sagging.

Buckle size $1\frac{7}{8}$ " x 3" Strap width is $1\frac{1}{2}$ ". Fits up to 50" waist.



ROGUE BLACK No.: PCS3310



ROGUE WALNUT No.: PCS3440



ROGUE ESPRESSO No.: PCS3327



SUPREME APPENDIX **GUN BELTS**



We've noticed whenever people wore their firearms appendix style, they always had a large buckle in the center which adds bulk to what they're trying to hide. Some people would slide the buckle to the side to lessen the bulk and for easier withdrawal of the firearm. We've designed a game changer. Our ratchet buckle is extra small, 1/2 the size of our regular buckle. So, whether you would like to have the buckle in the center or to the side, its diminutive size allows better access to your firearm and greater comfort.

Buckle size 1 1/16" x 1 7/16" - Belt strap width is 1 1/2" Fits up to 50" waist



SUPREME BLACK No.: PCS6830



SUPREME COYOTE No.: PCS6854



GUARDIAN SERIES **GUN BELTS**



People still love the rectangular look of buckles so we developed a line that caters to their tastes. The straps are the same as the ones used on the Supreme but we added 2 color variations – Black Camo and OD Green. We also have the Thin Line Series which are printed on the textured buckles.

Buckle size 1 1/6" x 2 1/4" – Belt strap width is 1 1/2". Fits up to 50" waist



GUARDIAN BLACK CAMO

No.: PCS7653

GUARDIAN OD GREEN

No.: PCS7646



GUARDIAN BLUE LINE

No.: PCS7660

GUARDIAN RED LINE

No.: PCS7677



GUARDIAN SPARTAN GUN BELTS

The buckles have a scratch resistant powder coated finish and are laser etched with our version of the Spartan logo (with the double guns for eyes and nose). This allows for a more durable buckle finish.

Buckle size 1 5/16" x 2 1/4" – Belt strap width is 1 1/2". Fits up to 50" waist



GUARDIAN SPARTAN BLACK
No.: PCS7622



GUARDIAN SPARTAN COYOTE
No.: PCS7639



BOND EDC **GUN BELTS**

If your job requires you to dress up, then the Bond Series is the perfect belt for you. Designed for detectives, attorneys, doctors, business owners and bodyguards. It's the most comfortable, reliable and beautifully crafted gun belt on the market. Engineered with a high quality leather to resist abrasion and a nylon backing to resist sweat. This belt blends right in with your wardrobe and keeps the element of surprise on your side.

Buckle size 1 5/8" x 2 5/16" – Belt strap width is 1 3/8" Fits up to 50" waist.



BOND BLACK No.: PCS5741



BOND CARBON BLACK No.: PCS5772



BOND BROWN No.: PCS5710



FRANCES SERIES **GUN BELTS**

Too many times women have to wear a men's EDC belt because the market place lacks feminine designs. We've addressed this issue with the Frances. The buckle design is based on an equestrian D ring which gives a more feminine feel. But still has the same durable construction of our other belts. Buckle size 1 3/4" x 2" – Belt strap width is 1 3/8". Fits up to 50" waist



FRANCES BLACK No.: PCS6915



FRANCES BROWN No.: PCS6922



XL EDC GUN BELTS

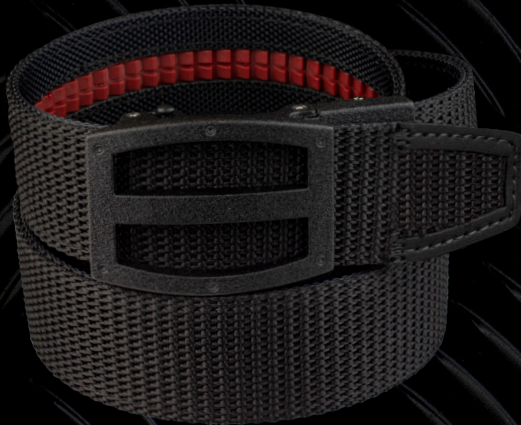
These are the most comfortable XL gun belts available today. All of the qualities of our regular sized gun belt but made to fit up to a 67" waist. Buckle size 1 7/8" x 3" – Belt strap width is 1 1/2" Fits up to 67" waist



ROGUE BLACK XL No.: PCS3372



ROGUE ESPRESSO XL No.: PCS3334



TITAN BLACK XL No.: PCS3389



TITAN GREY XL No.: PCS3396



TITAN COYOTE XL No.: PCS3402

SPECIALTY SERIES **GUN BELTS**



Looking for something more unique? We have two embossed buckles in the Gadsden and USA. The Cuff Key Belt is designed for police detectives. It has a hidden cuff key that pops out of the side of the buckle when both triggers are pushed. Very James Bondish!

Buckle size for Cuff Key Belt - 1 9/16" x 2 1/4"

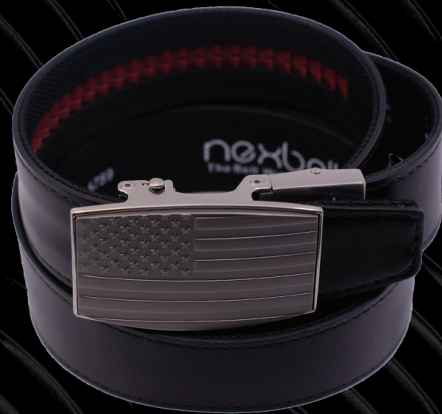
Buckle size for embossed belts - 1 5/8" x 2 3/4"



GADSDEN FLAG BLACK No.: PCS0654



CUFF KEY BELT No.: PCS6809



EMBOSSED USA PEWTER ASTON No.: PCS1286



GEAR

Our t-shirts are made of soft cotton that shrinks about 10% and it is so comfortable to the body. We also have some dog tags that are either etched or color printed. The shirts are printed in the U.S. while the dog tags are made by the same company that makes it for the U.S. Armed Forces. Both products are printed or laser etched in the U.S.



BLACK SERIES



FRONT
NEXBELT NATION SHIRT BLACK
Medium, Large, XL



BACK
NEXBELT NATION SHIRT BLACK
Medium, Large, XL



USA DOG TAG
No.: DT001



SPARTAN DOG TAG
No.: DT002



TEXAS DOG TAG
No.: DT003

COLOR SERIES



FRONT
NEXBELT NATION SHIRT GREY
Medium, Large, XL



BACK
NEXBELT NATION SHIRT GREY
Medium, Large, XL



USA DOG TAG
No.: DT004



SPARTAN DOG TAG
No.: DT005



TEXAS DOG TAG
No.: DT006



BLUE LINE DOG TAG
No.: DT007

DISPLAY SYSTEMS

ACRYLIC BOX DESIGN

Acrylic box can be conveniently hung on a hook or placed on a counter top.



SLAT WALL

No counter or table space? Only 10" high x 23" wide Hang them at a level where the customer can see the top of the boxes.



WOOD16 BELT COUNTER DISPLAY

16.5" high x 23.5" wide x 4.5" deep



TRIANGLE ROTATING DISPLAY

Holds 45 buckles, 40 belt straps, and 24 boxed belt packages.



STAND UP DISPLAY

Holds 80 boxed belt packages. 100 belt straps, 36 buckles. 5'7" high x 2' wide.



CUSTOMIZATION **GUN BELTS**

We specialize in customizing our belts for business, schools and charities. They make great gifts for employees and are a wonderful marketing tool to say thank you to your customers or vendors. Contact us for pricing, sales@nexusbelt.com



CORNER EMBOSSED: SUPREME BUCKLE W/ SLATE FINISH

WARRIOR POET SOCIETY



CORNER LASER ETCH: SUPREME BUCKLE W/ GRANITE BROWN POWDER COAT FINISH

BLACK AND GOLD GUY



DEBOSSSED: SHIELD W/ GRANITE BLACK POWDER COAT FINISH

WARRIOR POET SOCIETY



FULL LASER ETCH: ASTON BLACK

VAKANDI APPAREL

