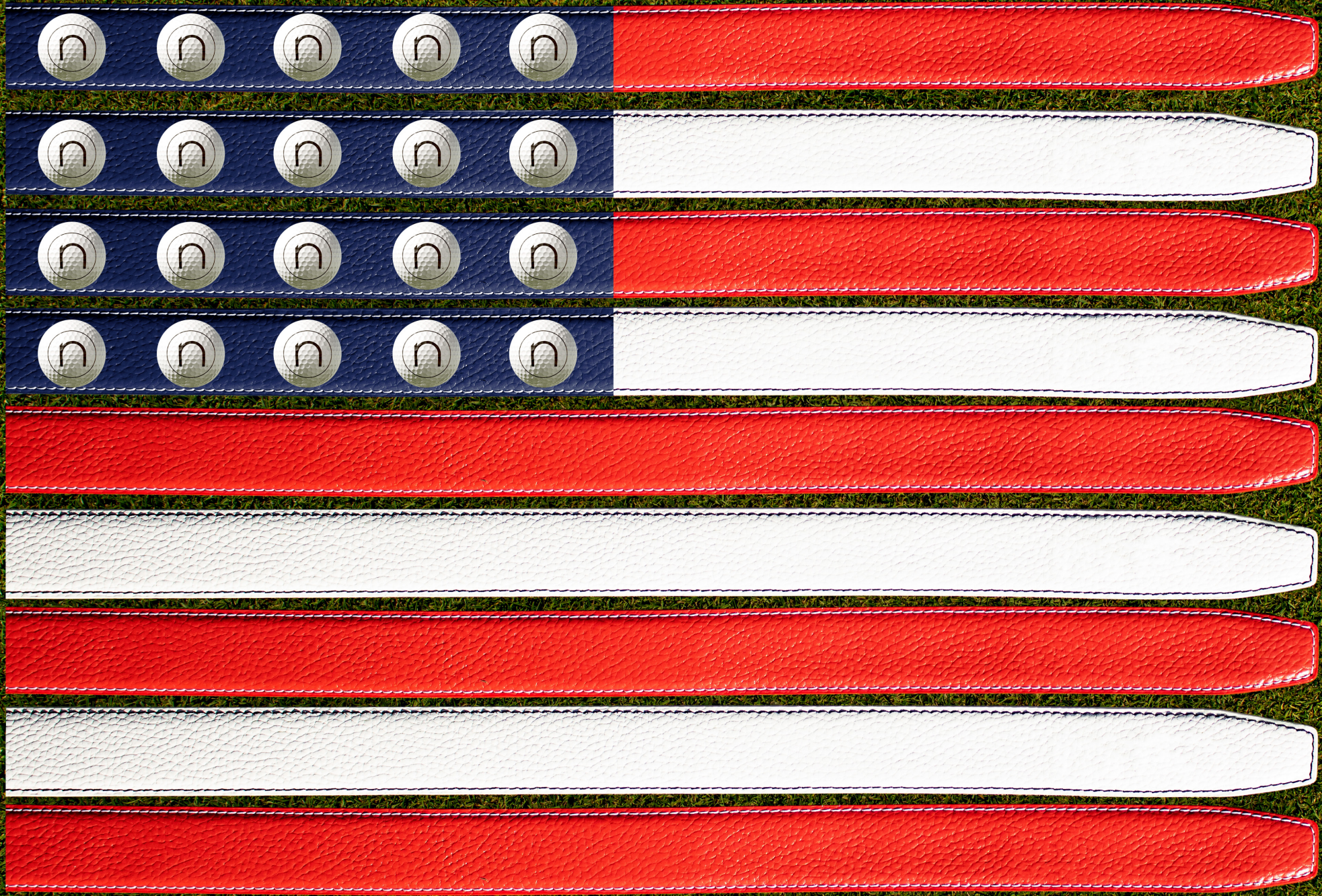


# NEXBELT 2020 GOLF CATALOG





# TABLE OF CONTENTS

<b>NEW</b> Classic Colour Series V.3 Series .....	2	Promote Your Brand .....	16
<b>NEW</b> Go-In! Colour Series V.3 Series .....	3	Custom Caps .....	17-18
Fast Eddie Series V.3 .....	4	Custom Ribbon Belts .....	19
Hampton Series .....	6	Custom Belts .....	20-21
Go-In! Shield Series V.3 .....	7	Custom Box .....	22
Go-In! Tradition Series .....	8	Tournament .....	23
<b>NEW</b> Ryder Cup Series .....	9-10	Display Systems .....	24
Heritage Series .....	11		
Miscellaneous .....	12		
Separates: Buckles .....	13-14		
Separates: Straps .....	14-15		

## Our **DRIVE** Vision Statement:

**D**eliver what we promise with integrity  
**R**etain the human touch  
**I**nvest in good people generously  
**V**alue our customers unconditionally  
**E**mbrace change with innovation



You may have noticed there are two catalogs this year. We've broken it into two distinct formats – Golf and Dress. As our business has grown, we've found it easier for customers to order when they're looking for a specific type of belt. Our thought process is if it's a Go-in! or Fast Eddie, it is definitely a golf belt. Other designs that are mainly dress belts, can be found in the Dress catalog. Belts that overlap in the gray area, we made best judgments. We think you will appreciate the easiness of use.

For the first time, the Colour Series will be offered with matching color stitching and while the change was small, the payoff was huge in creating a new look. For the Classic Colour Series we're introducing a new buckle design that we named Jarrod in honors of our friend Jarrod Lyle.

And let us not forget about our caps. We've redesigned the size and now it fits up to XL without any problems. We also upgraded the material as well and chose a design that won't interfere with a logo. They carry the tradition that Nexbelt espoused with our belts, by creating a beautiful design that fits all sizes. This allows you to cut down on inventory - which also means less capital tied up. They simply are the most comfortable caps you'll ever wear!

We would like to remind you that a great way to bring revenue to your shop is offering Nexbelts as tournament gifts. We can even customize belts and caps to make the occasion even more special. With our belts or caps, you don't have to worry about carrying different sizes. And if you do customize the buckles, make sure you carry extra regular buckles for the players to buy to give the new belts some versatility in looks.

To paraphrase a certain airline – "We know you have choices and we appreciate you choosing us." Our goal as your partner is to offer you the best product backed by exemplary service. We strive for that every day and we hope that shows.

**Best,**  
Eddie and Francis Rowland,  
Tom Hunsucker

**QUALITY IS NEVER AN ACCIDENT. IT IS ALWAYS**

**THE RESULT OF INTELLIGENT EFFORT .**

**- JOHN RUSKIN**



TEAM NEXBELT  
**JIM FURYK**  
2018 RYDER CUP TEAM CAPTAIN



TEAM NEXBELT  
**KEVIN NA**  
2019 SHRINERS HOSPITAL FOR CHILDREN OPEN CHAMPION



**NEW! CLASSIC COLOUR SERIES**

We've changed the buckle design and named it Jarrod in honors of Jarrod Lyle. It's a modern interpretation of our previous buckle. We also changed the strap stitching to match the leather. Buckle size 1 5/8" x 3" – Belt strap is 1 3/8". Fits up to 45" waist.



**CLASSIC PITCH BLACK** W/ GUNMETAL FINISH  
ITEM CODE: PCC4676  
★ AVAILABLE FOR STOCK TOURNAMENT PROGRAM



**CLASSIC COGNAC** W/ PEARL FINISH  
ITEM CODE: PCC4720



**CLASSIC DEEP SEA NAVY** W/ PEARL FINISH  
ITEM CODE: PCC4850



**CLASSIC TOBACCO** W/ BRASS FINISH  
ITEM CODE: PCC6373



**CLASSIC SMOKE GREY** W/ GUNMETAL FINISH  
ITEM CODE: PCC5055  
★ AVAILABLE FOR STOCK TOURNAMENT PROGRAM



**CLASSIC WINNER WHITE** W/ PEARL FINISH  
ITEM CODE: PCC5048  
★ AVAILABLE FOR STOCK TOURNAMENT PROGRAM

## NEW! GO-IN! COLOUR SERIES V.4

A subtle update that made dramatic changes. For the first time for the Colour Series, the stitching matches the leather and a new Pearl finish for all belts except for the Tobacco which still has Brass. Buckle size 1 5/8" x 2 5/16" – Belt strap is 1 3/8". Fits up to 45" waist.



Patent number 9,185,942

Every Go-In! Buckle has our new 2 sided ball marker with the direction arrow.



### GO-IN! PITCH BLACK

ITEM CODE: PGC3778

★ AVAILABLE FOR STOCK TOURNAMENT PROGRAM



### NEW! GO-IN! COGNAC

ITEM CODE: PGC3914

★ AVAILABLE FOR STOCK TOURNAMENT PROGRAM



### GO-IN! DEEP SEA NAVY

ITEM CODE: PGC3822



### GO-IN! TOBACCO

ITEM CODE: PGC3907



### GO-IN! SMOKE GREY

ITEM CODE: PGC4133



### GO-IN! WINNER WHITE

ITEM CODE: PGC4164



## **NEW!** FAST EDDIE SERIES V. 3

Convenience is the forefront of this spectacular design. Having a buckle that has a Ball Marker, Divot Fixer and Bottle Opener in one small package is the reason we refer to it as the Golfer's Survival Tool. Buckle size 1 5/8" x 2 5/16" – Belt strap is 1 3/8". Fits up to 45" waist.



**FAST EDDIE CARBON BLACK**

*ITEM CODE: PGF0616*



**FAST EDDIE PITCH BLACK**

*ITEM CODE: PGF6380*



**HAMPTON USA**  
*ITEM CODE: PCM2443*



# HAMPTON SERIES

Add a stylish fun to your wardrobe with these ribbon belts. This year we've brought a Tan belt with a new design. Buckle size 1 5/8" x 2 5/16" – Belt strap is 1 3/8" Fits up to 50" waist.



**NEW! HAMPTON BIRDIE** | ITEM CODE: PCM1347



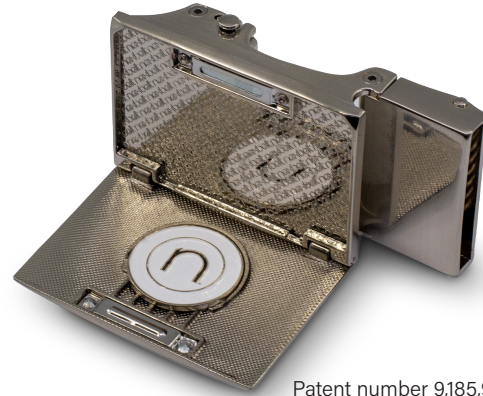
★ AVAILABLE FOR STOCK TOURNAMENT PROGRAM **HAMPTON TEE TIME** | ITEM CODE: PCM2450



**NEW! HAMPTON TEXAS** | ITEM CODE: PCM3600

# GO-IN! SHIELD SERIES V.3

The beveled design was a big hit and we'll continue with it. This subtle touch of having a beveled edge made for a distinctive look. Buckle size 1 5/8" x 2 5/16" – Belt strap is 1 3/8". Fits up to 45" waist.



Patent number 9,185,942

## GO-IN! SHIELD 3.0 BLACK

GO-IN! PART NO: PGG4515

CLASSIC PART NO: PCE4492



## GO-IN! SHIELD 3.0 ESPRESSO

GO-IN! PART NO: PGG4553

CLASSIC PART NO: PCE4539



## GO-IN! SHIELD 3.0 WHITE

GO-IN! PART NO: PGG4614

CLASSIC PART NO: PCE4584





**GO-IN! ESPRESSO**  
ITEM CODE: PGG4430



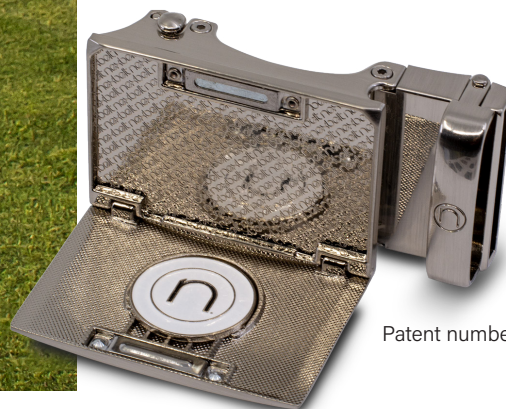
**GO-IN! SMOOTH WHITE**  
ITEM CODE: PGG4454



**GO-IN! CARBON BLACK**  
ITEM CODE: PGG4423



**GO-IN! SMOOTH BLACK**  
ITEM CODE: PGG4478



Patent number 9,185,942

## GO-IN! TRADITION SERIES

The beveled edge added a unique, modern design that separates our belts from the copy-cats. The Go-In buckle remains a popular favorite of the golfing enthusiasts.

Buckle size 1 5/8" x 2 5/16" – Belt strap is 1 3/8"  
Fits up to 45" waist.

# NEW! RYDER CUP SERIES

Are you prepared for the Ryder Cup onslaught? Stand apart from the crowd with our ratchet styled belts with the Go-In feature that includes a Ryder Cup logo ball marker. Buckle size 1 5/8" x 2 5/16" – Belt strap is 1 3/8". Fits up to 45" waist.



**GO-IN! RYDER CUP SMOOTH BLACK**  
ITEM CODE: CPG6441



**GO-IN! RYDER CUP CAPTAIN**  
W/WHITE & RED STITCH - ITEM CODE: CPG6465



**GO-IN! RYDER CUP ADMIRAL WHITE**  
W/BUE & RED STITCH - ITEM CODE: CPG6434



**GO-IN! RYDER CUP PG SUNDAY RED**  
ITEM CODE: CPG6458

**GO-IN! RYDER CUP GUNMETAL BUCKLE**  
ITEM CODE: CBG6403



FRONT SIDE BALL MARKER

BACK SIDE BALL MARKER

**HAMPTON RYDER CUP BELT**  
ITEM CODE: CPC6472



## NEW! RYDER CUP SERIES

Nexbelt will be offering the only Ryder Cup cap with the ratchet adjustable system – the most comfortable cap available today. Offer them something unique!  
One size fits all - small to extra large.



### RYDER CUP STEEL GREY

ITEM CODE: HCB-RCWSG



### RYDER CUP STEEL GREY

ITEM CODE: HCB-RCWSG



### RYDER CUP PITCH BLACK

ITEM CODE: HCB-RCWSB



### RYDER CUP DEEP SEA NAVY

ITEM CODE: HCB-RCWSN



### RYDER CUP WINNER WHITE

ITEM CODE: HCB-RCWSW

# HERITAGE SERIES

These belts can be worn anytime and with the electoral season looming, regardless your political affiliation, show everyone who comes first. Aston buckle sizes 1 11/16" x 2 13/16", Classic/Go-In size 1 5/8" x 2 5/16". Belt strap is 1 3/8". Fits up to 45" waist.



**HERITAGE USA BLACK ASTON**  
ITEM CODE: PCB7769



**HERITAGE USA EMBOSSED PEWTER ASTON**  
ITEM CODE: PCH7721



**HERITAGE USA ASTON**  
W/WHITE STRAP ITEM CODE: PCH2771  
W/BLACK STRAP ITEM CODE: PCH0586



**HERITAGE CAPTAIN**  
W/WHITE & RED STITCH - ITEM CODE: PCH0524



**HERITAGE USA BLACK GO-IN! 3.0**  
ITEM CODE: PGH5475



**HERITAGE BLACK USA**  
CLASSIC ITEM CODE: PCB5451  
GO-IN! ITEM CODE: PGB5468



**SUPER PATRIOT**  
W/WHITE STRAP ITEM CODE: PCZ4300  
W/BLACK STRAP ITEM CODE: PCZ4294

# MISCELLANEOUS

Buckle size 1 5/8" x 2 5/16" – Belt strap is 1 3/8". Fits up to 45" waist.



**GO-IN CARBON WHITE GOLF**

*ITEM CODE: EIS5877*



**JAKE CARBON WHITE**

*ITEM CODE: PCE6779*



**ASTON EAGLE WHITE**

*ITEM CODE: PCE6366*



**ASTON EAGLE BLACK**

*ITEM CODE: PCE6335*

# SEPARATES: BUCKLES



**SHIELD NICKEL BEVELED**

GO-IN! ITEM CODE: BGG4508  
CLASSIC ITEM CODE: BCE4485



**SHIELD GUNMETAL BEVELED**

GO-IN! ITEM CODE: BGG5406  
CLASSIC ITEM CODE: BCE5413



**FAST EDDIE BEVELED NICKEL**

ITEM CODE: BGF4591



**STEALTH BEVELED**

GO-IN! ITEM CODE: BGG5383  
CLASSIC ITEM CODE: BCE5390



**GO-IN PEWTER SHIELD**

ITEM CODE: BGG8469



**GO-IN SATIN NICKEL SHIELD**

ITEM CODE: BGG1835



**SHIELD BRASS**

GO-IN! ITEM CODE: BGG1576



**HOUSTON BRUSHED NICKEL**

ITEM CODE: BCS7417



**USA BRASS SHIELD**

GO-IN! ITEM CODE: BGH9442



**BEVELED USA BLACK**

GO-IN! ITEM CODE: BGB5901  
CLASSIC ITEM CODE: BCB5918



**BEVELED USA GUNMETAL**

GO-IN! ITEM CODE: BGH5888  
CLASSIC ITEM CODE: BCH5895



**BEVELED USA COLOR**

GO-IN! ITEM CODE: BGH5444



**ASTON USA COLOR**

ITEM CODE: BCH0579



**ASTON EMBOSSED USA**

ITEM CODE: BCH7639



**ANTIQUE EMBOSSED USA**

ITEM CODE: BCH1873



**ASTON BRUSHED PEWTER**

ITEM CODE: BCE5970



**ASTON BLACK**

ITEM CODE: BCE5949



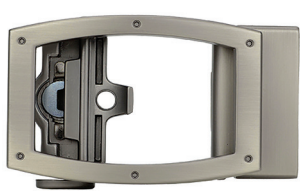
**ASTON EAGLE BLACK**

ITEM CODE: BCE5956



**ASTON EAGLE WHITE**

ITEM CODE: BCE5963



**APOLLO PEWTER**

ITEM CODE: BCS6243



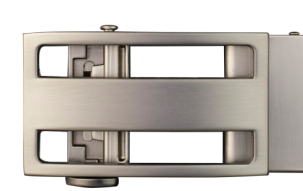
**APOLLO BLACK**

ITEM CODE: BCS6250



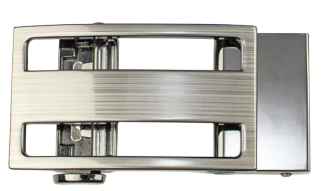
**JAKE GUNMETAL**

ITEM CODE: BCP2078



**JAKE SATIN NICKEL**

ITEM CODE: BCP9916



**JAKE GUNMETAL w/ LASER**

ITEM CODE: BCP2580



## SEPARATES: BUCKLES



**JAKE BRUSHED BRASS**  
ITEM CODE: BCP2603



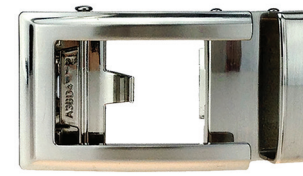
**CHRONOS PEWTER**  
ITEM CODE: BC06700



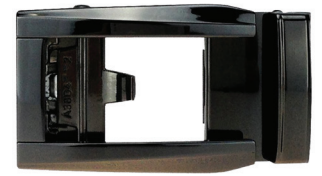
**CHRONOS DARK GUNMETAL**  
ITEM CODE: BC06717



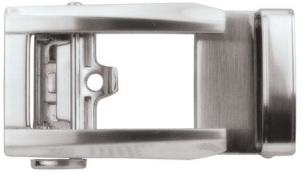
**CHRONOS BRUSHED NICKEL**  
ITEM CODE: BC06694



**ARTEMIS BRUSHED NICKEL**  
ITEM CODE: BCA1729



**PROMETHEUS GUNMETAL**  
ITEM CODE: BCL1163



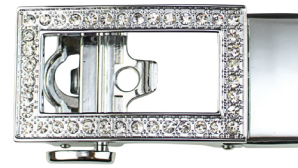
**PROMETHEUS MATTE NICKEL**  
ITEM CODE: BCL1859



**ALDRICH SATIN NICKEL**  
ITEM CODE: BCM2634



**OSCAR BRASS**  
ITEM CODE: BCN6168



**ALLIE CHROME**  
ITEM CODE: BC13983



**ALLIGATOR BLACK**  
ITEM CODE: SAL0913



**ALLIGATOR COFFEE**  
ITEM CODE: SAL3747



**ALLIGATOR GREY II**  
ITEM CODE: SAL7066



**ALLIGATOR NAVY**  
ITEM CODE: SAL0944



**ALLIGATOR TAN**  
ITEM CODE: SAL0951



**ALLIGATOR WHITE**  
ITEM CODE: SAL0968

## SEPARATES: STRAPS

# SEPARATES: STRAPS



**CARBON BLACK**  
ITEM CODE: SEL0760



**EBONY**  
ITEM CODE: SEL0852



**STAINLESS BLACK**  
ITEM CODE: SEL4263



**SMOOTH BLACK**  
ITEM CODE: SEL0869



**CARBON WHITE**  
ITEM CODE: SEL0845



**SMOOTH WHITE**  
ITEM CODE: SEL0906



**ESPRESSO**  
ITEM CODE: SEL4683



**WALNUT**  
ITEM CODE: SEL0753



**PEBBLE GRAIN DEEP SEA NAVY**  
ITEM CODE: SCL3617  
FOR WHITE STITCHING: SCL1415



**PEBBLE GRAIN SMOKE GREY**  
ITEM CODE: SCL3723  
FOR WHITE STITCHING: SCL1446



**PEBBLE GRAIN TOBACCO**  
ITEM CODE: SCL3716  
FOR TAN STITCHING: SCL1484



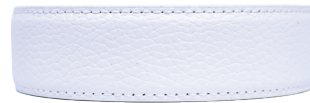
**PEBBLE GRAIN PITCH BLACK**  
ITEM CODE: SCL3761  
FOR WHITE STITCHING: SCL1439



**PEBBLE GRAIN COGNAC**  
ITEM CODE: SCL3631  
FOR DARK BROWN STITCHING: SCL1477



**PEBBLE GRAIN SUNDAY RED**  
ITEM CODE: SCL1460



**PEBBLE GRAIN WINNER WHITE**  
ITEM CODE: SCL3754  
FOR GREY STITCHING: SCL4331



**LEGARDO BLACK**  
ITEM CODE: SWL3679



**LEGARDO BROWN**  
ITEM CODE: SWL3693



**PORTOFINO CORDOVAN**  
ITEM CODE: SPL1538



**BASKET WEAVE BLACK**  
ITEM CODE: SEL1392



**BASKET WEAVE BROWN**  
ITEM CODE: SEL1408



**NEWPORT NATIONAL**  
ITEM CODE: SNC5321



**NEWPORT NAVY**  
ITEM CODE: SNC5123



**NEWPORT BLACK**  
ITEM CODE: SNC5109



**NEWPORT GREY**  
ITEM CODE: SNC5116



**NEWPORT TAN**  
ITEM CODE: SNC5130

**PROMOTE YOUR BRAND!  
YOUR EVENT!  
YOUR GOLF COURSE!  
YOUR COMPANY!**



## NEW! NEXBELT CUSTOM CAPS



Custom Embroidered Country  
Club Logo



### PITCH BLACK

ITEM CODE: HCN3456

Don't customize any old cap. Give your customers something new and fresh.

- Our patent pending caps have our belt's ratchet technology which allows the wearer to adjust on the fly without having to take their caps off.
- Great for tournaments or small shops - One size fits all! No more having to carry different sizes.
- Women prefer our caps over "Flex style" caps because of the opening in the back which allows for a ponytail.
- A beanie can be worn under our caps because of it's adjustability - "Flex style" caps can't adapt.
- "Flex style" caps create a constant pressure - with our Nexbelt caps, the pressure can be adjusted to comfort level required.
- "Flex style" caps stretch and change shape and are inconsistent in sizing - Nexbelt Caps gives PreciseFit™.



**STEEL GREY**  
ITEM CODE: HCN2345



**DEEP SEA NAVY**  
ITEM CODE: HCN4567



**WINNER WHITE**  
ITEM CODE: HCN1234



**STEEL GREY**  
ITEM CODE: HCN2345



# CUSTOM RIBBON RATCHET BELTS!

We're the first belt company in the world to make ribbon ratchet belts and now we're offering customization. Offer your members and guests a familiar look but with the convenience of wearing a ratchet belt. These belts are great for branding your golf course or corporate events and make excellent tournament gifts. And with our cut to size system, they are so convenient because you don't have to worry about sizes. Fits up to 50"



# HOW TO CUSTOMIZE: STEP 1: CHOOSE YOUR BUCKLE - GOLF OR CLASSIC SERIES

## ETCHED .....



GUNMETAL AVAILABLE IN BRUSHED NICKEL



STEALTH



BRASS



ASTON BRUSHED NICKEL AVAILABLE IN STEALTH AND PEWTER

## EMBOSSSED .....



GUNMETAL AVAILABLE IN BRUSHED NICKEL



STEALTH



BRASS



ASTON BRUSHED NICKEL AVAILABLE IN STEALTH AND PEWTER

## COLOR .....



GUNMETAL AVAILABLE IN BRUSHED NICKEL



STEALTH



BRASS



ASTON BRUSHED NICKEL AVAILABLE IN STEALTH AND PEWTER

# HOW TO CUSTOMIZE: STEP 2: CHOOSE YOUR STRAP

Fourteen leather and canvas straps to choose from. Ask to upgrade to Premium Finishes.



SMOOTH BLACK  
ITEM CODE: SEL0869



ESPRESSO  
ITEM CODE: SEL4683



WALNUT  
ITEM CODE: SEL0753



SMOOTH WHITE  
ITEM CODE: SEL0906



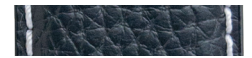
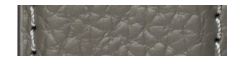
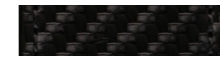
CARBON BLACK  
ITEM CODE: SEL0760



SMOKE GREY PG  
ITEM CODE: SCL3723



STORM GREY PG  
ITEM CODE: SCL1422



DEEP SEA NAVY PG  
ITEM CODE: SCL3617



ALLIGATOR BLACK  
ITEM CODE: SAL0913



ALLIGATOR COFFEE  
ITEM CODE: SAL3747



NAVY NEWPORT  
ITEM CODE: SNC5123



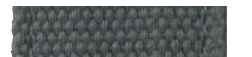
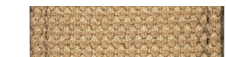
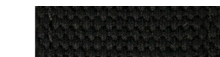
BLACK NEWPORT  
ITEM CODE: SNC5109



TAN NEWPORT  
ITEM CODE: SNC5130



GREY NEWPORT  
ITEM CODE: SNC1750





# HOW TO CUSTOMIZE: STEP 3: CHOOSE YOUR BOX

**POLY CARBONATE BOX**



**SATIN BLACK SOFTBOARD**



**PIANO BLACK WOOD FINISH**



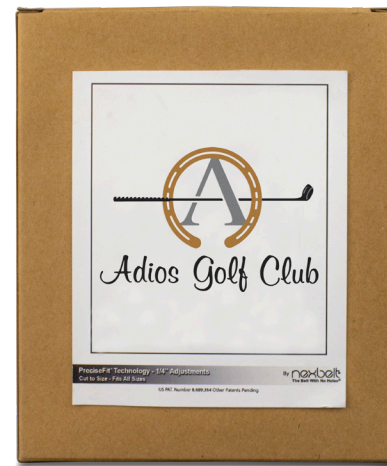
**BROWN BOX**

*Standard box has Nexbelt logo.*



**BROWN BOX**

*Logo upgrade shown*



# TOURNAMENT PACKAGES



**GO-IN PITCH BLACK**  
ITEM CODE: PGC3778



**GO-IN COGNAC**  
ITEM CODE: PGC3914



**CLASSIC PITCH BLACK W/ GUNMETAL FINISH**  
ITEM CODE: PCC4676



**CLASSIC SMOKE GREY W/ GUNMETAL FINISH**  
ITEM CODE: PCC5055



**CLASSIC WINNER WHITE W/ SATIN NICKEL FINISH**  
ITEM CODE: PCC5048



**VETICA CARBON BLACK**  
ITEM CODE: PCE4638



**CROCODILE BLACK**  
ITEM CODE: PCR1699



**CROCODILE BROWN**  
ITEM CODE: PCR1736



**HAMPTON TEE TIME W/ SATIN NICKLE FINISH**  
ITEM CODE: PCM2450



**BRAIDED CHARCOAL**  
ITEM CODE: PCD6519



**BRAIDED GREY W/ LASER BRUSHED MARKS FINISH**  
ITEM CODE: PCD6229



**BRAIDED NAVY W/ PEWTER FINISH**  
ITEM CODE: PCD6267

# DISPLAY SYSTEMS

## STAND UP DISPLAY

Holds 80 boxed belt packages, 100 belt straps, 36 buckles. 5'9" high x 24" wide x 22" deep



## TRIANGLE ROTATING DISPLAY

Holds 45 buckles, 40 belt straps, and 24 boxed belt packages. 5'7" high x 2' wide.

### 45 BUCKLES



### 40 BELT STRAPS



### 24 BELT PACKAGES



## WOOD 4 BELT COUNTER DISPLAY

4" high x 10" wide x 9.5" deep



## SLAT WALL

No counter or table space? We have you covered. With the belts hanging in place, the bracket takes up only 10" x 23" space. Hang them at a level where the customer can see the top of the boxes.



## ATTRACTIVE SPACE SAVING BOX DESIGN



## WOOD 16 BELT COUNTER DISPLAY

16.5" high x 23.5" wide x 4.5" deep



# 10 REASONS WHY NEXBELT IS THE SMART CHOICE!

1. Eliminate multiple SKU's with our PreciseFit™ scaling system
2. Unique packaging takes up less space: Perfect for smaller retailers
3. Most styles fit up to 45"
4. Less inventory means less money tied up
5. Perfect tee prize give away - no more worries about carrying multiple sizes
6. Proven sales success
7. Customers love the 1/4" adjustments and hidden marker
8. Variety of colors and buckle designs to attract customers
9. Ability to swap buckles
10. Your club's logo can be showcased on the buckle and/or ball marker

"Nexbelt does a great job of making a great looking belt that is easy to use, easy to sell and easy inventory. The selection and quality are second to none, which makes it simple to stock or give out as a tournament gift. Nexbelt will always be on our shelves at the Dallas Athletic Club!"

Lance Patterson - Dallas Athletic Club DOG

"I love many things about this company but the best is no guessing the sizes when placing an order. It makes everything so easy from stock to special events which our members love!"

Blair Smith - Royal Oaks Country Club Buyer

