



NEXBELT
2020 DRESS BELT CATALOG



TABLE OF CONTENTS

Rogue Series	01	Vanguard Series Slim 1 1/4" Belt	14
Shield V.3 Series	02	XL Series	15
Vintage Full Grain Series	02	NEW Frances Women Series	16
Classic Series	03	Aldrich Women Series	17
Vetica Series	04	Legardo Sleek Women Series	18
NEW Alligator Series	05	Madrid Women Series	18
NEW Crocodile Series	06	Miscellaneous Series	19
NEW Suede Series	07	Separates: Buckles	20-21
NEW Basket Weave Series	08	Separates: Straps	21-22
Camden Series	08	Display Systems	23
Newport Series V.4	09	10 Reasons Why Nexbelt	24
Braided Series	11		
USA Flag Tip Series	13		

Our **DRIVE** Vision Statement:

- D**eliver what we promise with integrity
- R**etain the human touch
- I**ncubate in good people generously
- V**alue our customers unconditionally
- E**mbrace change with innovation



This Nexbelt Dress Belt catalog is the first year we've separated it from our traditional catalog. As we've grown, we believe this is a better way to show our beautiful line of belts for men and women.

Our team have been working hard this year to bring to you a new line of belts that we know will redefine the ratchet belt.

Besides the new belt, you'll see updates of venerable like the Alligator embossed belts. After 7 years, we've finally made a change to it. While in our mind it seemed small, the end product is nothing but remarkable. It completely changed the looks of the belt and the response has been phenomenal!

Staying with the reptile theme - see our new embossed Crocodile belts. Beautifully crafted and gorgeous to the touch. What makes them unique is they're a little larger in height - 1.5", to better show off its rich details.

Another new line of belts is the Suede series. We've designed a very different buckle that would appeal to even the traditionalist pin buckle fan. It has the looks of the traditional belts without any of its flaws.

There are many more designs so please peruse through the catalog.

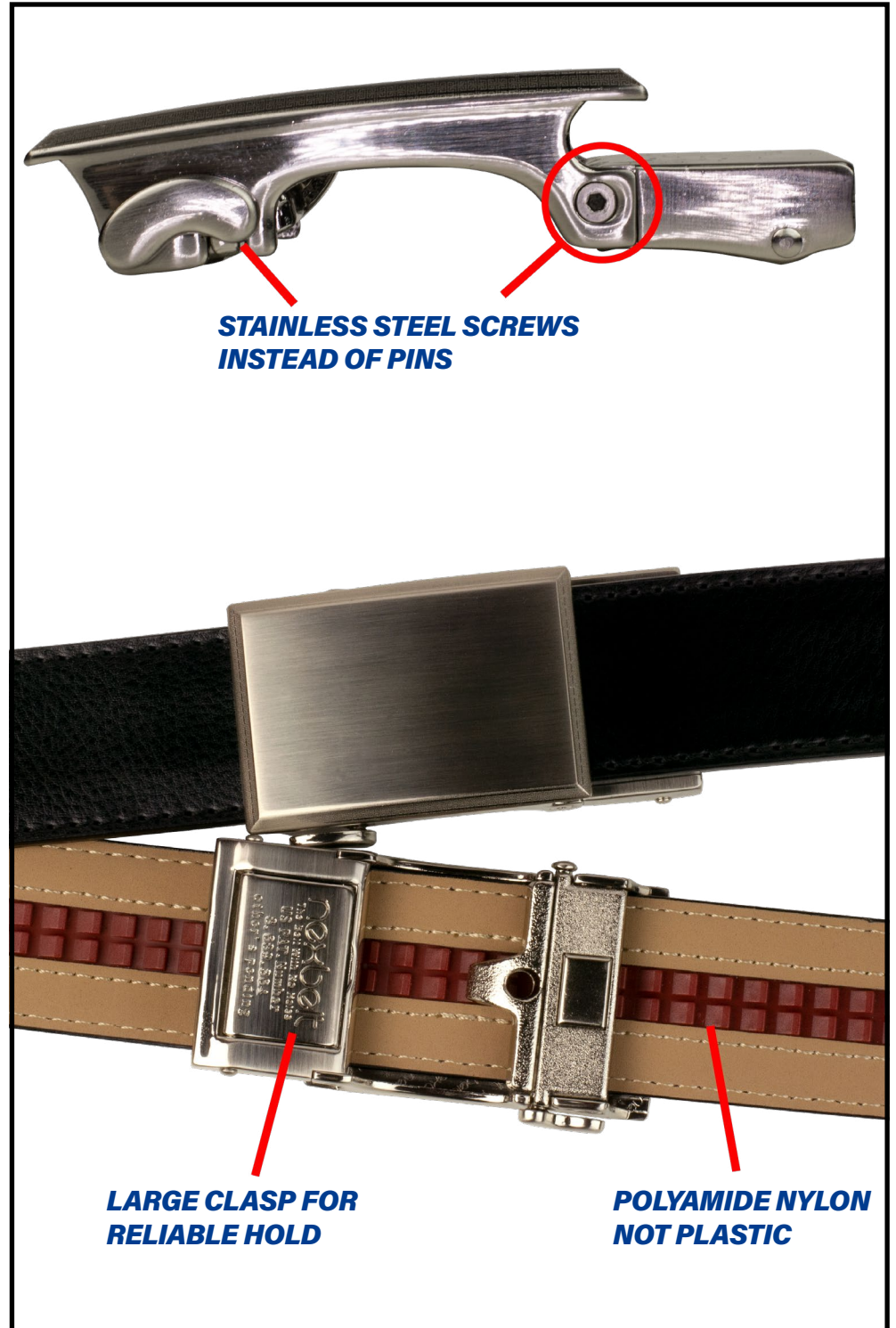
To paraphrase a certain airline - "We know you have choices and we appreciate you choosing us." Our goal as your partner is to offer you the best product backed by exemplary service. We strive for that every day and we hope that shows.

Best,
Eddie and Francis Rowland,
Tom Hunsucker

QUALITY IS NEVER AN ACCIDENT. IT IS ALWAYS

THE RESULT OF INTELLIGENT EFFORT .

- JOHN RUSKIN



ROGUE SERIES

Such a versatile belt that can be worn with jeans or chinos – even with slacks. We've added another design – Carbon Black with a black buckle. And we updated the buckle finish on the Rogue Walnut to brushed nickel. Buckle size 1 5/8" x 2 5/16" – Belt strap is 1 3/8". Fits up to 45" waist.



ROGUE BLACK
ITEM CODE: PCE4713



ROGUE ESPRESSO
ITEM CODE: PCE4737



ROGUE WALNUT
ITEM CODE: PCE6526



ROGUE CARBON BLACK
ITEM CODE: PCE0319





SHIELD 3.0 BLACK

CLASSIC PART NO: PCE4492



SHIELD 3.0 WHITE

CLASSIC PART NO: PCE4584



SHIELD 3.0 ESPRESSO

CLASSIC PART NO: PCE4539

VINTAGE FULL GRAIN SERIES

Full grain leather that is soft and malleable to the touch. This classic design paired with a pair of jeans offers that iconic American look.

Buckle size 1 5/8" x 2 5/16" – Belt strap is 1 3/8". Fits up to 45" waist.



VINTAGE BOURBON

ITEM CODE: PCP4881



VINTAGE COAL

ITEM CODE: PCP4874

SHIELD SERIES V.3

The beveled design was a big hit and we'll continue with it. This subtle touch of having a beveled edge made it for a distinctive look.

Buckle size 1 5/8" x 2 5/16" – Belt strap is 1 3/8". Fits up to 45" waist.



CLASSIC SERIES

Our first patented design continues to win converts from pin buckle belts. It's a classic design that endures.

Buckle size 1 5/8" x 2 5/16" – Belt strap is 1 3/8" Fits up to 45" waist



CLASSIC SMOOTH BLACK

ITEM CODE: PCE5246



CLASSIC EBONY

ITEM CODE: PCE2580



CLASSIC ESPRESSO

ITEM CODE: PCE4065



CLASSIC WALNUT

ITEM CODE: PCE2603

VETICA SERIES

This series of belts are the perfect dress belt for an outfit that matches the occasion. It hits the checkbox in looks and offers unparalleled comfort for the office, date night or any special occasions where presentation is important. Buckle size 1 5/8" x 2 5/16" – Belt strap is 1 3/8". Fits up to 45" waist



VETICA BROWN

ITEM CODE: PCE4676



VETICA BLACK

ITEM CODE: PCE4706



VETICA CARBON BLACK

ITEM CODE: PCE4638

★ AVAILABLE FOR STOCK TOURNAMENT PROGRAM



NEW! ALLIGATOR SERIES

Our first redesign in over 7 years! You'll love the new buckle design with a leather keeper that just made the belt look that much more sophisticated. Buckle size 1 5/8" x 2 5/16" – Belt strap is 1 3/8". Fits up to 45" waist.



ALLIGATOR WHITE

ITEM CODE: PCA1644



ALLIGATOR NAVY

ITEM CODE: PCA1477



ALLIGATOR COFFEE

ITEM CODE: PCA1606



ALLIGATOR TAN

ITEM CODE: PCA1460



ALLIGATOR BLACK

ITEM CODE: PCA1453



ALLIGATOR GREY

ITEM CODE: PCA1651



NEW! CROCODILE SERIES

Inspired by a certain lefty on the golf course, we've designed this new crocodile embossed belt. The strap is a little wider - 1 1/2" instead of 1 3/8". Be prepared for compliments.

Buckle size 1 5/8" x 2 5/16" - Belt strap is 1 1/2". Fits up to 45" waist.



CROCODILE BLACK

ITEM CODE: PCR1699

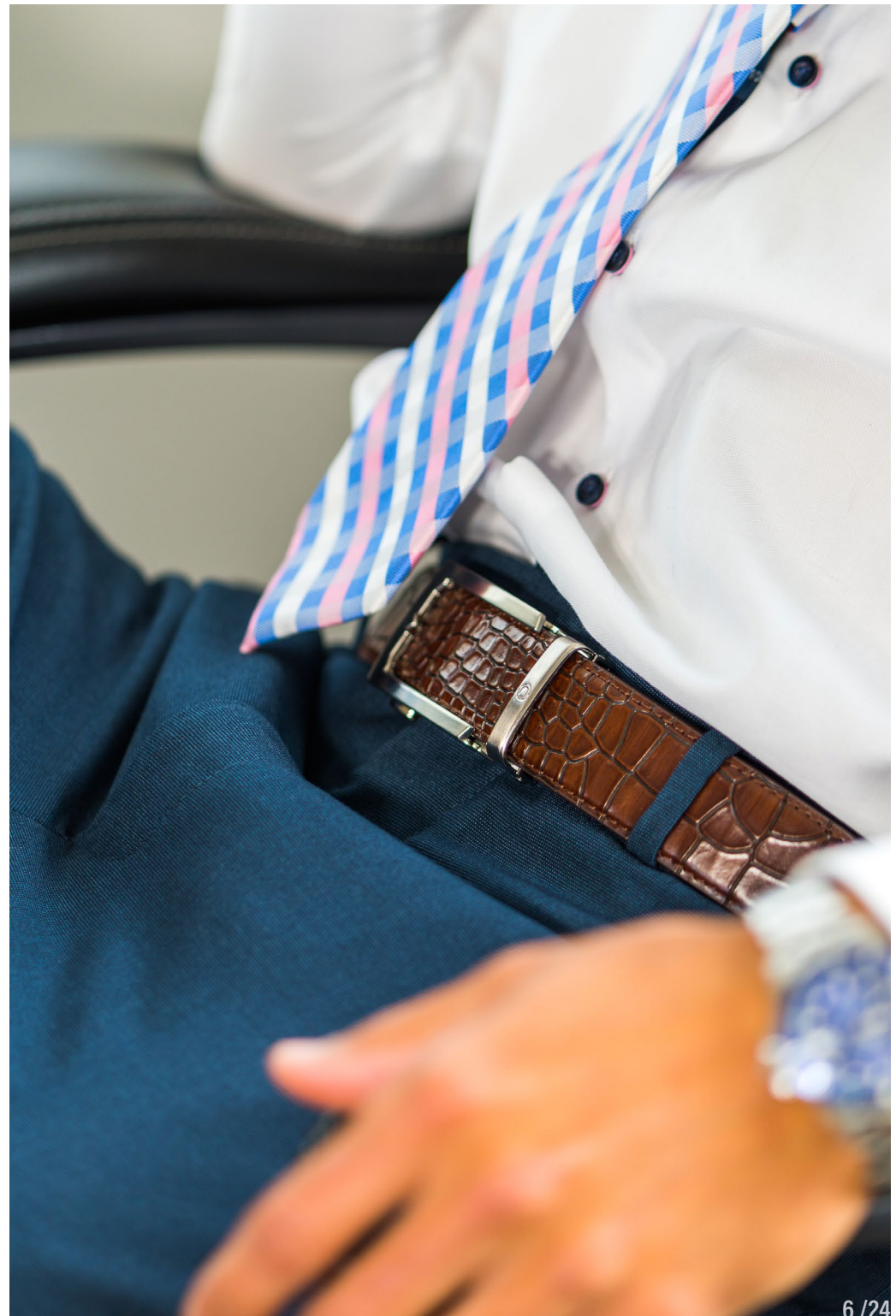
★ AVAILABLE FOR STOCK TOURNAMENT PROGRAM



CROCODILE BROWN

ITEM CODE: PCR1736

★ AVAILABLE FOR STOCK TOURNAMENT PROGRAM



NEW! SUEDE SERIES

Brand new from the ground up. We have the new suede with 4 colors that will match most wardrobes. We're also introducing it with a brand new buckle – the Austin. These belts add a splash of color to anyone's wardrobe. Buckle size 1 5/8" x 2 5/16" – Belt strap is 1 3/8". Fits up to 45" waist.



SUEDE TAN
ITEM CODE: PCE0791



SUEDE BLACK
ITEM CODE: PCE0746



SUEDE GREY
ITEM CODE: PCE0975



SUEDE NAVY
ITEM CODE: PCE0821



NEW! BASKET WEAVE SERIES

We've rethought this design thoroughly. It took a lot of R&D but we're very happy to say this maybe the best leather basket weave ratchet belt on the market today. Which is easy to say since we're the only one that is capable of this. Buckle size 1 5/8" x 2 5/16" - Belt strap is 1 3/8". Fits up to 45" waist.



MADURO WEAVE BLACK

ITEM CODE: PCE6717



CLARO WEAVE BROWN

ITEM CODE: PCE6724

CAMDEN SERIES

Sometimes you want your belt to express a little more of yourself. Instead of the traditional smooth surface, a little lizard texture adds a little character to your wardrobe. Buckle size 1 5/8" x 2 5/16" - Belt strap is 1 3/8". Fits up to 45" waist.



CAMDEN BLACK

ITEM CODE: PCX5369



CAMDEN BROWN

ITEM CODE: PCX5376



NEWPORT SERIES V.4

These belts are great with shorts and casual dress. They are the perfect choice in humid weather because of their lightness and breathability. And we have every color needed for a person's wardrobe on or off the golf course. Buckle size 1 11/16" x 2 3/4" – Belt strap is 1 3/8". Fits up to 50" waist.



NEWPORT BLACK
ITEM CODE: PCN6533



NEWPORT GREY
ITEM CODE: PCN6540



NEWPORT NAVY
ITEM CODE: PCN6557



NEWPORT TAN
ITEM CODE: PCN6564



NEWPORT NATIONAL
ITEM CODE: PCN1408



NEWPORT WHITE
ITEM CODE: PCN1422



BRAIDED SERIES

These belts have been a big hit with the fashion conscious looking for a relaxed belt for upscale casual wear. This year we've brought 2 more designs with Tri-Colors to expand the color palette.

Buckle size 1 5/8" x 2 5/16" – Belt strap is 1 3/8". Fits up to 50" waist.



NEW!

BRAIDED CHARCOAL | ITEM CODE: PCD6519

★ AVAILABLE FOR STOCK TOURNAMENT PROGRAM



NEW!

BRAIDED MOCHA | ITEM CODE: PCD6502



BRAIDED BLACK W/ BRUSHED NICKEL FINISH | ITEM CODE: PCD6274



BRAIDED GREY W/ LASER BRUSHED MARKS FINISH | ITEM CODE: PCD6229

★ AVAILABLE FOR STOCK TOURNAMENT PROGRAM



BRAIDED NAVY W/ PEWTER FINISH | ITEM CODE: PCD6267

★ AVAILABLE FOR STOCK TOURNAMENT PROGRAM





USA FLAG TIP SERIES

A new idea on how to show your patriotism. We've stamped the American Flag for a subtle yet very patriotic look.

Buckle size 1 5/8" x 2 3/8" - Belt strap width is 1 3/8". Fits up to 45" waist.



SMOOTH BLACK USA FLAG TIP DEBOSSD

PACKAGE ITEM CODE: PCH6236



SMOOTH WHITE USA FLAG TIP DEBOSSD

PACKAGE ITEM CODE: PCH6243



VANGUARD SERIES SLIM 1 1/4" BELT

Thin is sometimes in. There are people who just prefer a thinner belt. The Vanguard is 1 1/4" compared to our normal 1 3/8". That may not sound like much but with the way we worked the stitching and the contouring of the strap, it gives the illusion of being 1" wide. And it works well for both men and ladies.

Buckle size 1 5/8" x 2 5/16" – Belt strap is 1 1/4". Fits up to 45" waist.



VANGUARD SLIM BLACK

ITEM CODE: PCP5055



VANGUARD SLIM BROWN

ITEM CODE: PCP5062



XL SERIES

Big and tall folks are giving us high compliments for our belts. They love the easiness of use and the sturdiness of the construction. Buckle size 1 5/8" x 2 5/16" – Belt strap is 1 3/8". Fits up to 67" waist.



CLASSIC ESPRESSO XL

ITEM CODE: PCE2542

NEW!



CLASSIC EBONY XL

ITEM CODE: PCE0500



NEW! FRANCES SERIES

We've added a softer feminine buckle to our line of ladies belts. An elegant stylish take on an equestrian D ring. Buckle size is 1 3/16 x 2" – Belt strap is 1 3/8". Fits up to 40" waist. **EACH PACKAGE INCLUDES AN EXTRA BUCKLE!**



FRANCES EBONY

ITEM CODE: PCM0586



FRANCES WHITE

ITEM CODE: PCM0593

ALDRICH SERIES

Texture adds to a wardrobe and Aldrich's lizard print adds a touch of sophistication to any outfit. Buckle size 1 5/8" x 2 5/16" - Belt strap is 1 3/8". Fits up to 45" waist.

EACH PACKAGE INCLUDES AN EXTRA BUCKLE!



ALDRICH BLACK (Fits up to 45" waist)

ITEM CODE: PCX4775



ALDRICH PINK (Fits up to 45" waist)

ITEM CODE: PCX4799



ALDRICH BROWN (Fits up to 45" waist)

ITEM CODE: PCX4782



LEGARDO SLEEK SERIES

A thin belt is all the rage and with our Lizard imprint. It adds a nice style point to your wardrobe. Buckle size is 1 3/16 x 2" – Belt strap is 1". Fits up to 40" waist.



LEGARDO SLEEK BROWN (Fits up to 40" waist)
ITEM CODE: PC14867

LEGARDO SLEEK PINK (Fits up to 40" waist)
ITEM CODE: PC14836

NOTE! EACH PACKAGE INCLUDES AN EXTRA BUCKLE!

MADRID SERIES

The leathers are slightly textured giving the strap a little nuance to an outfit. The thin size will fit any pants loop. Buckle size is 1 3/16 x 2" – Belt strap is 1". Fits up to 40" waist.



MADRID BLACK (Fits up to 40" waist)
ITEM CODE: PCK4959

MADRID WHITE (Fits up to 40" waist)
ITEM CODE: PCK4966



MISCELLANEOUS

All belt packages straps are 1 3/8" wide.



PORTOFINO CORDOVAN

ITEM CODE: PCP2504



PORTOFINO BROWN

ITEM CODE: PCP3747



LIZARD BROWN DRESS

ITEM CODE: PCL4126



BASKET WEAVE BROWN

ITEM CODE: PCE5093



BASKET WEAVE BLACK

ITEM CODE: PCE5086



VETICA RAVEN BLACK

ITEM CODE: PCE4652



NEWPORT IVY

ITEM CODE: PCN5352



HOUSTON STAINLESS

ITEM CODE: PCE6762



MIDNIGHT RAVEN

ITEM CODE: PCE6601



TITAN STAINLESS

ITEM CODE: PCE6755



TITAN ESPRESSO

ITEM CODE: PCE6748



ASTON BLACK

ITEM CODE: PCE6373

SEPARATES: BUCKLES



SHIELD NICKEL BEVELED
 GO-IN! ITEM CODE: BGG4508
 CLASSIC ITEM CODE: BCE4485



SHIELD GUNMETAL BEVELED
 GO-IN! ITEM CODE: BGG5406
 CLASSIC ITEM CODE: BCE5413



FAST EDDIE BEVELED NICKEL
 ITEM CODE: BGF4591



STEALTH BEVELED
 GO-IN! ITEM CODE: BGG5383
 CLASSIC ITEM CODE: BCE5390



GO-IN PEWTER SHIELD
 ITEM CODE: BGG8469



GO-IN SATIN NICKEL SHIELD
 ITEM CODE: BGG1835



SHIELD BRASS
 GO-IN! ITEM CODE: BGG1576



HOUSTON BRUSHED NICKEL
 ITEM CODE: BCS7417



USA BRASS SHIELD
 GO-IN! ITEM CODE: BGH9442



BEVELED USA BLACK
 GO-IN! ITEM CODE: BGB5901
 CLASSIC ITEM CODE: BCB5918



BEVELED USA GUNMETAL
 GO-IN! ITEM CODE: BGH5888
 CLASSIC ITEM CODE: BCH5895



BEVELED USA COLOR
 GO-IN! ITEM CODE: BGH5444



ASTON USA COLOR
 ITEM CODE: BCH0579



ASTON EMBOSSED USA
 ITEM CODE: BCH7639



ANTIQUE EMBOSSED USA
 ITEM CODE: BCH1873



ASTON BRUSHED PEWTER
 ITEM CODE: BCE5970



ASTON BLACK
 ITEM CODE: BCE5949



ASTON EAGLE BLACK
 ITEM CODE: BCE5956



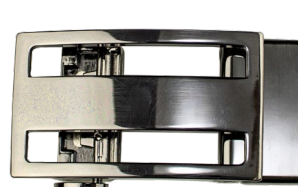
ASTON EAGLE WHITE
 ITEM CODE: BCE5963



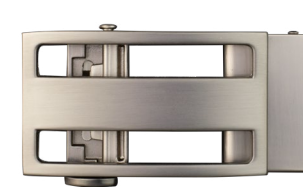
APOLLO PEWTER
 ITEM CODE: BCS6243



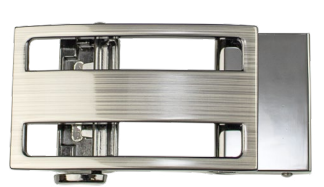
APOLLO BLACK
 ITEM CODE: BCS6250



JAKE GUNMETAL
 ITEM CODE: BCP2078



JAKE SATIN NICKEL
 ITEM CODE: BCP9916



JAKE GUNMETAL W/LASER
 ITEM CODE: BCP2580

SEPARATES: BUCKLES



JAKE BRUSHED BRASS
ITEM CODE: BCP2603



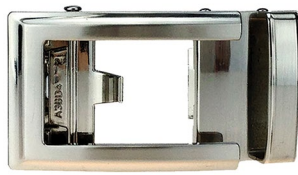
CHRONOS PEWTER
ITEM CODE: BC06700



CHRONOS DARK GUNMETAL
ITEM CODE: BC06717



CHRONOS BRUSHED NICKEL
ITEM CODE: BC06694



ARTEMIS BRUSHED NICKEL
ITEM CODE: BCA1729



PROMETHEUS GUNMETAL
ITEM CODE: BCL1163



PROMETHEUS MATTE NICKEL
ITEM CODE: BCL1859



ALDRICH SATIN NICKEL
ITEM CODE: BCM2634



OSCAR BRASS
ITEM CODE: BCN6168



ALLIE CHROME
ITEM CODE: BCI3983

SEPARATES: STRAPS



ALLIGATOR BLACK
ITEM CODE: SAL0913



ALLIGATOR COFFEE
ITEM CODE: SAL3747



ALLIGATOR GREY II
ITEM CODE: SAL7066



ALLIGATOR NAVY
ITEM CODE: SAL0944



ALLIGATOR TAN
ITEM CODE: SAL0951



ALLIGATOR WHITE
ITEM CODE: SAL0968

SEPARATES: STRAPS



CARBON BLACK
ITEM CODE: SEL0760



EBONY
ITEM CODE: SEL0852



STAINLESS BLACK
ITEM CODE: SEL4263



SMOOTH BLACK
ITEM CODE: SEL0869



CARBON WHITE
ITEM CODE: SEL0845



SMOOTH WHITE
ITEM CODE: SEL0906



ESPRESSO
ITEM CODE: SEL4683



WALNUT
ITEM CODE: SEL0753



PEBBLE GRAIN DEEP SEA NAVY
ITEM CODE: SCL3617
FOR WHITE STITCHING: SCL1415



PEBBLE GRAIN SMOKE GREY
ITEM CODE: SCL3723
FOR WHITE STITCHING: SCL1446



PEBBLE GRAIN TOBACCO
ITEM CODE: SCL3716
FOR TAN STITCHING: SCL1484



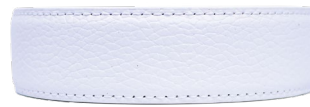
PEBBLE GRAIN PITCH BLACK
ITEM CODE: SCL3761
FOR WHITE STITCHING: SCL1439



PEBBLE GRAIN COGNAC
ITEM CODE: SCL3631
FOR DARK BROWN STITCHING: SCL1477



PEBBLE GRAIN SUNDAY RED
ITEM CODE: SCL1460



PEBBLE GRAIN WINNER WHITE
ITEM CODE: SCL3754
FOR GREY STITCHING: SCL4331



LEGARDO BLACK
ITEM CODE: SWL3679



LEGARDO BROWN
ITEM CODE: SWL3693



PORTOFINO CORDOVAN
ITEM CODE: SPL1538



BASKET WEAVE BLACK
ITEM CODE: SEL1392



BASKET WEAVE BROWN
ITEM CODE: SEL1408



NEWPORT NATIONAL
ITEM CODE: SNC5321



NEWPORT NAVY
ITEM CODE: SNC5123



NEWPORT BLACK
ITEM CODE: SNC5109



NEWPORT GREY
ITEM CODE: SNC5116



NEWPORT TAN
ITEM CODE: SNC5130

DISPLAY SYSTEMS

STAND UP DISPLAY

Holds 80 boxed belt packages, 100 belt straps, 36 buckles. 5'9" high x 24" wide x 22" deep



TRIANGLE ROTATING DISPLAY

Holds 45 buckles, 40 belt straps, and 24 boxed belt packages. 5'7" high x 2' wide.

45 BUCKLES



40 BELT STRAPS



24 BELT PACKAGES



WOOD 4 BELT COUNTER DISPLAY

4" high x 10" wide x 9.5" deep



SLAT WALL

No counter or table space? We have you covered. With the belts hanging in place, the bracket takes up only 10" x 23" space. Hang them at a level where the customer can see the top of the boxes.



WOOD 16 BELT COUNTER DISPLAY

16.5" high x 23.5" wide x 4.5" deep



ATTRACTIVE SPACE SAVING BOX DESIGN



10 REASONS WHY NEXBELT IS THE SMART CHOICE!

1. Eliminate multiple SKU's with our PreciseFit™ scaling system
2. Unique packaging takes up less space: Perfect for smaller retailers
3. Most styles fit up to 45"
4. Less inventory means less money tied up
5. Proven sales success
6. Customers love the 1/4" adjustments
7. Variety of colors and buckle designs to attract customers
8. Ability to swap buckles
9. Customers will always have their correct size
10. Best built ratchet belt on the market today

2020 DRESS BELT CATALOG



10390 REGIS CT | RANCHO CUCAMONGA, CA 91730 | PH: (909) 758-0079 | E-MAIL: SALES@NEXBELT.COM | WEB: WWW.NEXBELT.COM